

**Humboldt County  
Economic and Demographic Profile, 1999**



**Humboldt County**  
**Economic and Demographic Profile, 1999**

Study Conducted by:

Shawn W. Stoddard, Sean Feeney,

Kevin Verre, Linda Wong

and

Thomas R. Harris

Shawn W. Stoddard is a Research Associate with the University Center for Economic Development in the Department of Applied Economics and Statistics at the University of Nevada, Reno

Sean Feeney is a student employee in the Department of Applied Economics and Statistics at the University of Nevada, Reno

Kevin Verre is a graduate student in the Department of Applied Economics and Statistics at the University of Nevada, Reno

Linda Wong is a word processing operator in the University Center for Economic Development at the University of Nevada, Reno.

Thomas R. Harris is a Professor in the Department of Applied Economics and Statistics and Director of the University Center for Economic Development at the University of Nevada, Reno.

November 1999

**UNIVERSITY  
OF NEVADA  
RENO**

The University of Nevada, Reno is an Equal Opportunity/Affirmative Action employer and does not discriminate on the basis of race, color, religion, sex, age, creed, national origin, veteran status, physical or mental disability, and in accordance with university policy, sexual orientation, in any program or activity it operates. The University of Nevada employs only United States citizens and aliens lawfully authorized to work in the United States.

This publication, *Humboldt County Economic and Demographic Profile, 1999* was published by the University Center for Economic Development in the Department of Applied Economics and Statistics at the University of Nevada, Reno. Funds for this publication were provided by the United States Department of Commerce Economic Development Administration under University Centers Program contract #07-06-03262-99. This publication's statements, findings, conclusions, recommendations, and/or data represent solely the findings and views of the authors and do not necessarily represent the views of Humboldt County Commissioners, the U.S. Department of Commerce, the Economic Development Administration, the University of Nevada, Reno, or any reference sources used or quoted by this study. Reference to research projects, programs, books, magazines, or newspaper articles does not imply an endorsement or recommendation by the authors unless otherwise stated. Correspondence regarding this document should be sent to:

Thomas R. Harris, Director  
University Center for Economic Development  
University of Nevada, Reno  
Department of Applied Economics and Statistics  
Mail Stop 204  
Reno, Nevada 89557-0105  
Phone: 775/784-6499



UCED  
University of Nevada, Reno  
Nevada Cooperative Extension  
Department of Applied Economics and Statistics

## Table of Contents

Chapter 1. Demographics.....	1
Chapter 2. Labor Force and Employment .....	29
Chapter 3. Income .....	35
Chapter 4. Sales Taxes.....	48

## List of Tables

Table 1. County Populations .....	2
Table 2. Nevada State Demographer’s Population Estimates (1997) and Forecasts 1998-2018) for Humboldt County .....	8
Table 3. Nevada State Demographer’s Historical Population Estimates 1950 to 1997.....	9
Table 4. Median Population Age by County, 1996, 2001 and 2006.....	11
Table 5. Population by Age in Humboldt County, 1996, 2001 and 2006.....	12
Table 6. Population by Gender and Age in Humboldt County, 1996 and Projections for 2001 and 2006 .....	19
Table 7. Population by Race/Ethnicity by County for 1996, 2001 and 2006. (Churchill through Lincoln) .....	27
Table 8. Population by Race/Ethnicity by County for 1996, 2001 and 2006. (Lyon through White Pine Counties and Carson City) .....	28
Table 9. Humboldt County Economic and Demographic Profile, 1999 .....	34
Table 10. Humboldt County Personal Income from 1987 to 1991 .....	44
Table 11. Humboldt County Personal Income from 1992 to 1996.....	45
Table 12. State of Nevada Personal Income from 1987 to 1991 .....	46
Table 13. State of Nevada Personal Income from 1992 to 1996 .....	47
Table 14. Total Sales Tax Collected in Humboldt County, May 1995 to November 1998.....	50
Table 15. Taxable Sales for Selected Business Sectors for Humboldt County, Fiscal Years 1995-96; 1996-97 and 1997-98. ....	51

## List of Figures

Figure 1. Rural County Populations for 1996, 2001 and 2006 .....	1
Figure 2. Map .....	3
Figure 3. Nevada State Demographer’s Office Projections to 2018 for Humboldt County.....	5
Figure 4. Population Annual Percent Change for Humboldt County and the State of Nevada, 1950 to 1997 .....	6
Figure 5. Three Year Moving Average of Annual Percent Change for Humboldt County and the State of Nevada, 1950 to 1997 .....	7
Figure 6. Median Age for Nevada Counties .....	11
Figure 7. Age of Population in Humboldt County, 1996.....	13
Figure 8. Age of Population in Humboldt County, 2001 .....	14
Figure 9. Age of Population in Humboldt County, 2006.....	15
Figure 10. Population by Gender and Age in Humboldt County, 1996 .....	16
Figure 11. Projected Population by Gender and Age in Humboldt County, 2001 .....	17
Figure 12. Projected Population by Gender and Age in Humboldt County, 2006 .....	18
Figure 13. Nevada Non-Metropolitan County White Population for 1996, 2001 and 2006 .....	21
Figure 14. Nevada Non-Metropolitan County Black Population for 1996, 2001 and 2006 .....	22
Figure 15. Nevada Non-Metropolitan County Native American Population for 1996, 2001 and 2006 .....	23
Figure 16. Nevada Non-Metropolitan County Asian or Pacific Islander Population for 1996, 2001 and 2006 .....	24
Figure 17. Nevada Non-Metropolitan County Forecast for Other Races for 1996, 2001 and 2006 .....	25

Figure 18. Nevada Non-Metropolitan County Hispanic Proportionate Population, 1996.....	26
Figure 19. Total Labor Force for Humboldt County and the State of Nevada, 1995 to 1998 .....	30
Figure 20. Total Employment for Humboldt County and the State of Nevada, 1995 to 1998.....	31
Figure 21. Total Unemployed for Humboldt County and the State of Nevada, 1995 to 1998.....	32
Figure 22. Unemployment Rate for Humboldt County and the State of Nevada, 1995 to 1998. ....	33
Figure 23. Total Personal Income for Humboldt County and the State of Nevada, 1987 to 1996. ....	37
Figure 24. Nonfarm Personal Income for Humboldt County and the State of Nevada, 1987 to 1996.....	38
Figure 25. Farm Income for Humboldt County and the State of Nevada, 1987 to 1996 .....	39
Figure 26. REIS Population for Humboldt County and the State of Nevada, 1987 to 1996. ....	40
Figure 27. Per Capita Personal Income for Humboldt County and the State of Nevada, 1987 to 1996.....	41
Figure 28. Components of Income for Humboldt County for 1987 to 1996 .....	42
Figure 29. Income by Selected Industry in Humboldt County, 1987 to 1996. ....	43
Figure 30. Total Monthly Taxable Sales in Humboldt County for May 1995 to November 1998.....	48
Figure 31. Top 20 Taxable Sales Categories for Humboldt County, fiscal years 1995-96; 1996-97; 1997-98 .....	49

## Chapter 1: Demographics

This chapter covers demographic data for Humboldt County compared to other Nevada counties. A time series analysis of trends in demographic data is also shown.

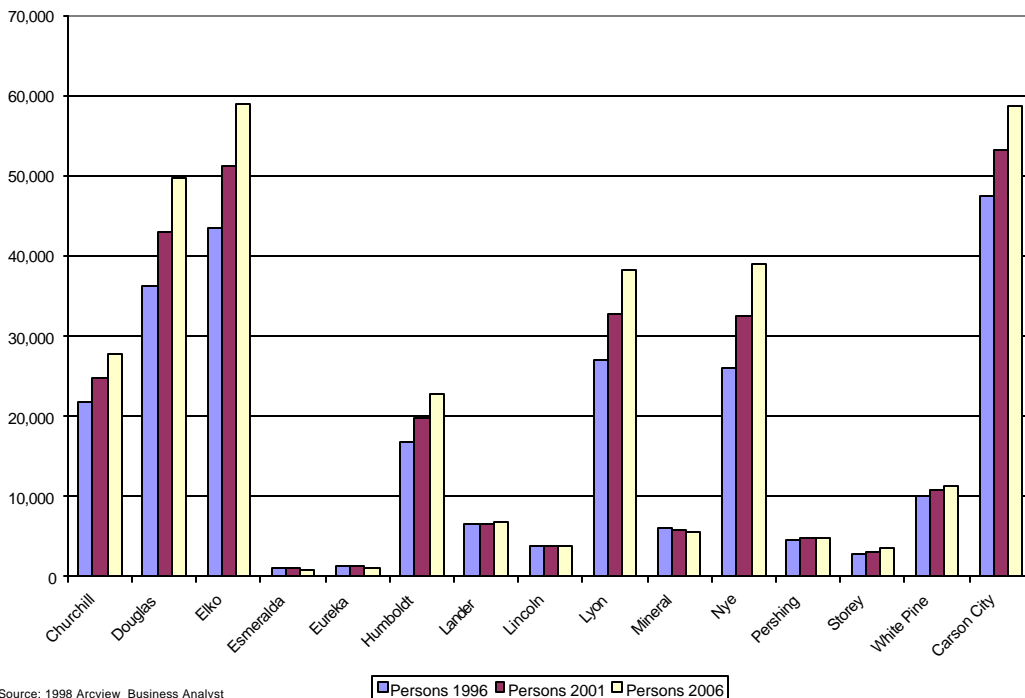
### *County and City Population*

Population is shown for the county and each incorporated place within the county. Population growth in the county is compared to growth in the state, while population growth in the incorporated place is compared to growth in the county. This data is collected from the 1998 Environmental Systems Research Institute, Inc. version of ArcView Business Analyst. For more information on Business Analysis please visit the Business Analyst web page at <http://www.esri.com/software/businessanalyst/index.html>.

Figure 1 and Table 1 show population forecasts for non-metropolitan counties in Nevada for 1996, 2001 and 2006. Population in Humboldt County is forecast to steadily increase.

Humboldt County population is forecast to increase from 16,721 in 1996 to 22,835 in 2006 or a forecast population increase of 36%. Humboldt County is also forecast to remain the 9<sup>th</sup> largest county in population in the state from 1996 to 2006.

### *Rural County Populations*



Source: 1998 Arcview Business Analyst  
**Figure 1: Rural County Populations for 1996, 2001, and 2006**

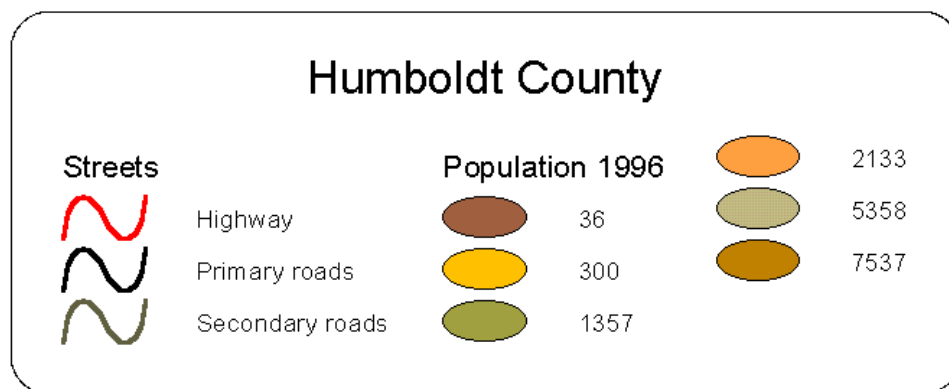
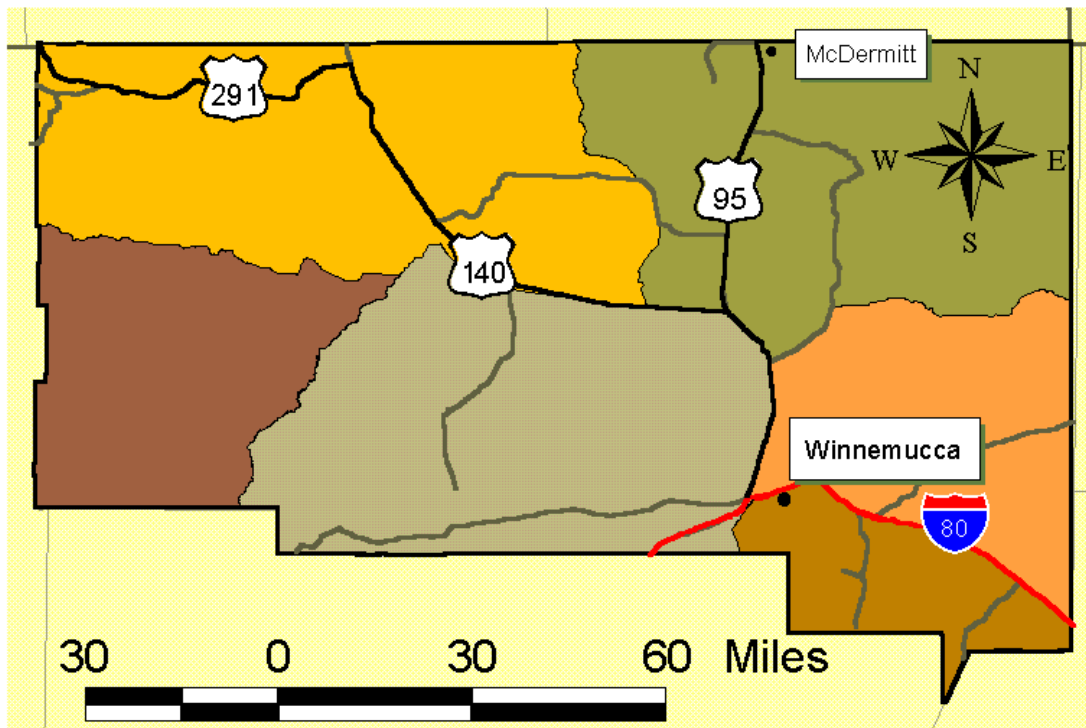


**Table 1: County Populations**

	Persons 1996	Percent of State	Rank 1996	Persons 2001	Percent of State	Rank 2001	Persons 2006	Percent of State	Rank 2006
Carson City	47,601	3.0%	3	53,156	2.8%	3	58,589	2.6%	4
Churchill	21,798	1.4%	8	24,829	1.3%	8	27,793	1.2%	8
Clark	1,044,424	65.3%	1	1,287,789	67.2%	1	1,527,082	68.6%	1
Douglas	36,187	2.3%	5	43,003	2.2%	5	49,691	2.2%	5
Elko	43,424	2.7%	4	51,290	2.7%	4	59,014	2.6%	3
Esmeralda	1,157	0.1%	17	1,012	0.1%	17	884	0.0%	17
Eureka	1,392	0.1%	16	1,265	0.1%	16	1,148	0.1%	16
Humboldt	16,721	1.0%	9	19,806	1.0%	9	22,835	1.0%	9
Lander	6,532	0.4%	11	6,699	0.3%	11	6,855	0.3%	11
Lincoln	3,858	0.2%	14	3,894	0.2%	14	3,924	0.2%	14
Lyon	27,102	1.7%	6	32,785	1.7%	6	38,366	1.7%	7
Mineral	6,152	0.4%	12	5,848	0.3%	12	5,552	0.2%	12
Nye	25,975	1.6%	7	32,572	1.7%	7	39,066	1.8%	6
Pershing	4,582	0.3%	13	4,747	0.2%	13	4,904	0.2%	13
Storey	2,909	0.2%	15	3,203	0.2%	15	3,490	0.2%	15
Washoe	298,944	18.7%	2	333,273	17.4%	2	366,812	16.5%	2
White Pine	10,114	0.6%	10	10,734	0.6%	10	11,334	0.5%	10
Total State	1,598,872			1,915,905			2,227,339		

## Map of Humboldt County

This map is compiled from ArcView Business Analyst and shows the 1996 population by census tracts, key highways and roads. The most populated areas are located in the eastern region of Humboldt County and the least populated areas are located in the western region of the county.



## *Nevada State Demographer's Office Projections to 2018*

The data presented in this component were taken directly from the "**Nevada Population Projections and Forecasts, 1998 - 2018 and Review of Methods.**" This report was prepared by Dean H. Judson, Ph.D. State Demographer for Nevada Department of Taxation in April, 1998. A copy of this document can be obtained from the Nevada State Demographer's Office, University of Nevada, Reno (775) 784-6352. Included are the population estimates for Humboldt County from 1950 to 1998 and low, medium, and high forecasts to the year 2018. From this data the annual percent change and a three-year moving average of the percent change were calculated to show how population growth fluctuates over time.

- Figure 3 shows estimated population growth for Humboldt County under low, moderate and high economic conditions.
- Population in 1997 for Humboldt County was estimated to be 17,520. Under high estimates, population is forecast to increase to 31,670 in 2018 or an increase of 80.8 percent. Under middle or average expansion, population is estimated to increase to 25,430 in 2018 or 45.2 percent increase. Under low population expansion scenario, Humboldt County population is forecast to decrease to 15,250 in 2018 or a 13 percent decrease.
- Assumptions of alternative growth scenarios employed can be found in "Nevada Population Projections and Forecasts, 1998-2018 and Review of Methods."

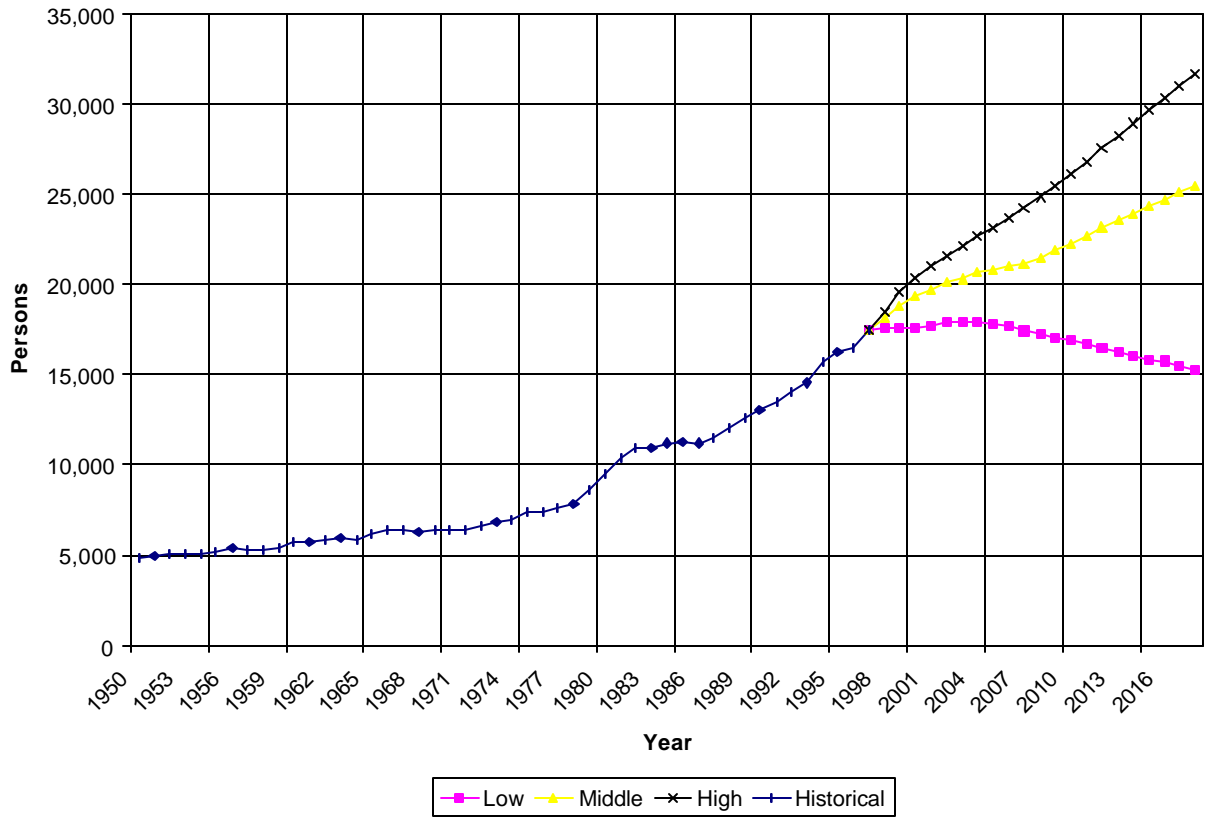
**i. Humboldt High:** Grocery and auto stores develop. An air service to Reno and Salt Lake is created. With the air service and improved visitors agencies, tourism will increase. Marketing for the country increases, and more businesses are attracted to the area. Housing developments arise, and families are attracted due to the jobs and expanding community. Mine lay-offs are low. Several golf courses currently being discussed are developed.

**ii. Humboldt Middle:** Wal-Mart, Kragen, and a senior complex open creating about 145 jobs, perhaps more in coming years. Getchell gold lays off 100 people, Hycroft to lay off 100, and then 36. Commuting to neighboring mines in Carlin and Battle Mountain decreases due to widespread lay-offs. Community improvement funding is slow, thus the rise in tourism is slow. Industrial companies slowly enter the community.

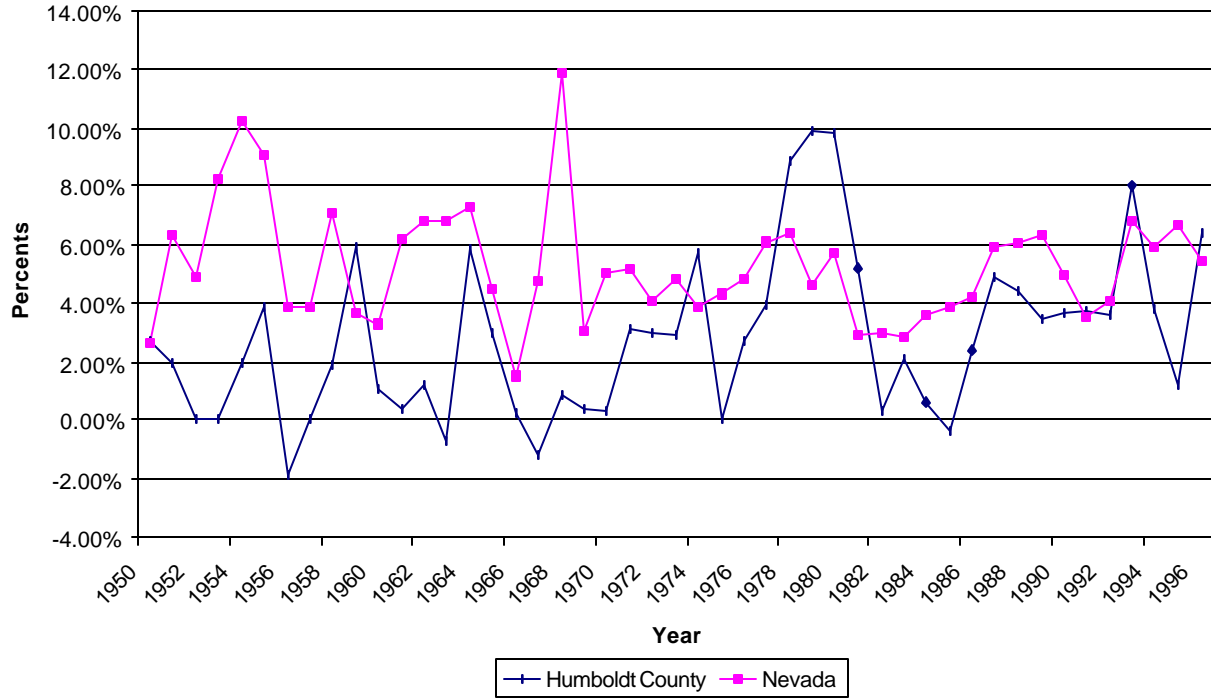
**iii. Humboldt Low:** Funding for community improvement is at a standstill. Due to the 236 mining jobs lost, people move out of the county looking for jobs, since there are only 145 new jobs to be found within the county. Housing developments as well as businesses and industry, are put on hold due to the slow economy. Neighboring Florida Canyon Mine suspends operations, causing job losses.

- Figure 4 and Table 3 show the population trends for Humboldt County and the state of Nevada. Figure 4 shows that population trends for Humboldt County were generally lower than the state's annual percentage change. Most recently the trend has been lower than the state of Nevada.

**Figure 3. Nevada State Demographer's Office Projections to 2018 for Humboldt County**

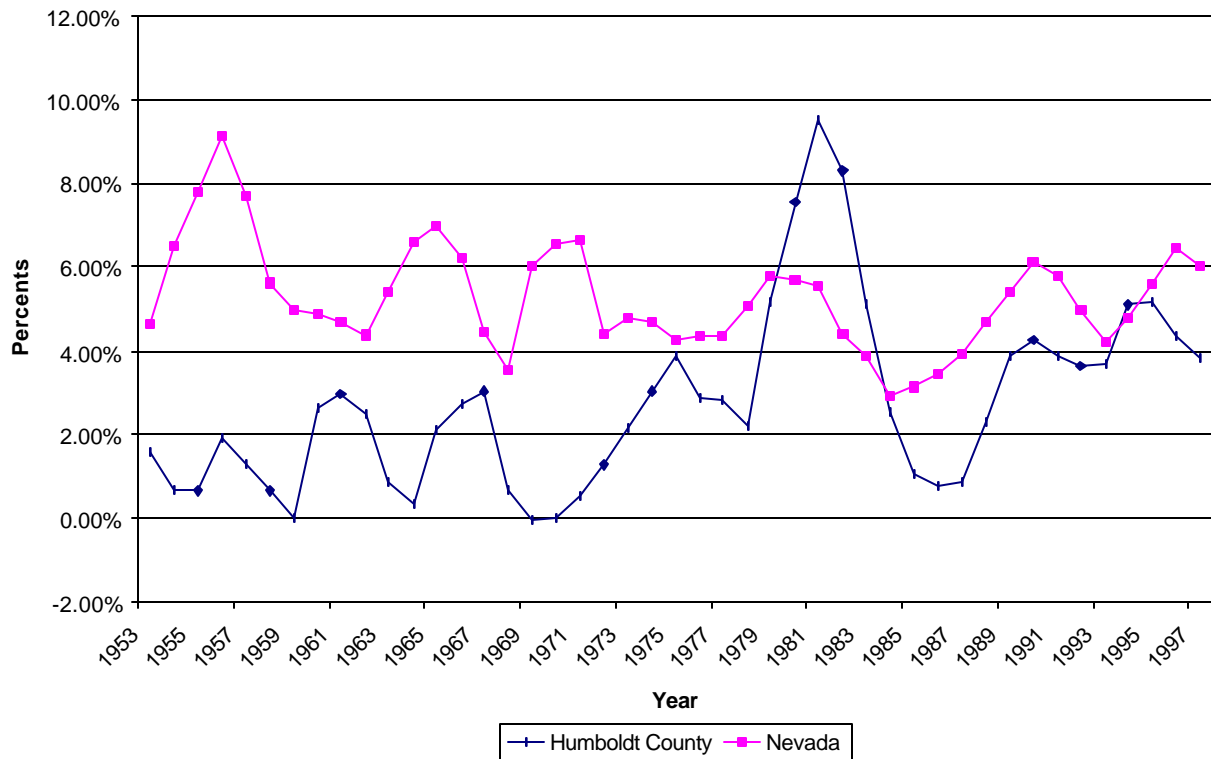


**Figure 4. Population Annual Percent Change for Humboldt County and the State of Nevada, 1950 to 1997**



- Figure 5 and Table 3 show a three-year moving average of population change for Humboldt County and the state of Nevada. As seen in Figure 5, the moving average population change for Humboldt County was generally below the state value.

**Figure 5. Three Year Moving Average of Annual Percent Change for Humboldt County and the State of Nevada, 1950 to 1997.**



**Table 2. Nevada State Demographer's Population Estimates (1997) and Forecasts (1998-2018) for Humboldt County**

<b>Year</b>	<b>Low</b>	<b>Middle</b>	<b>High</b>
1997	17,520	17,520	17,520
1998	17,540	18,190	18,450
1999	17,580	18,810	19,540
2000	17,580	19,320	20,360
2001	17,700	19,680	21,040
2002	17,890	20,130	21,610
2003	17,870	20,320	22,130
2004	17,930	20,650	22,630
2005	17,790	20,790	23,130
2006	17,650	21,040	23,660
2007	17,390	21,160	24,220
2008	17,270	21,460	24,830
2009	17,020	21,880	25,470
2010	16,890	22,310	26,150
2011	16,630	22,730	26,850
2012	16,470	23,160	27,560
2013	16,220	23,590	28,270
2014	16,060	23,970	28,970
2015	15,810	24,350	29,660
2016	15,750	24,730	30,340
2017	15,510	25,090	31,020
2018	15,250	25,430	31,670

**Table 3. Nevada State Demographer's Historical Population Estimates 1950 to 1997**

<b>Year</b>	<b>Nevada Population</b>	<b>Annual Percent Change</b>	<b>Three-year Moving Average</b>	<b>Humboldt County Population</b>	<b>Annual Percent Change</b>	<b>Three-year Moving Average</b>
1950	161,145			4,870		
1951	165,400	2.64%		5,000	2.67%	
1952	175,900	6.35%		5,100	2.00%	
1953	184,600	4.95%	4.64%	5,100	0.00%	1.56%
1954	199,800	8.23%	6.51%	5,100	0.00%	0.67%
1955	220,200	10.21%	7.80%	5,200	1.96%	0.65%
1956	240,100	9.04%	9.16%	5,400	3.85%	1.94%
1957	249,500	3.92%	7.72%	5,300	-1.85%	1.32%
1958	259,200	3.89%	5.61%	5,300	0.00%	0.66%
1959	277,500	7.06%	4.95%	5,400	1.89%	0.01%
1960	287,660	3.66%	4.87%	5,723	5.98%	2.62%
1961	297,185	3.31%	4.68%	5,783	1.05%	2.97%
1962	315,599	6.20%	4.39%	5,806	0.40%	2.48%
1963	336,990	6.78%	5.43%	5,876	1.21%	0.88%
1964	360,114	6.86%	6.61%	5,836	-0.68%	0.31%
1965	386,466	7.32%	6.99%	6,178	5.86%	2.13%
1966	403,696	4.46%	6.21%	6,363	2.99%	2.72%
1967	409,843	1.52%	4.43%	6,380	0.27%	3.04%
1968	429,273	4.74%	3.57%	6,303	-1.21%	0.68%
1969	480,306	11.89%	6.05%	6,356	0.84%	-0.03%
1970	494,990	3.06%	6.56%	6,380	0.38%	0.00%
1971	520,000	5.05%	6.67%	6,400	0.31%	0.51%
1972	546,800	5.15%	4.42%	6,600	3.13%	1.27%
1973	569,200	4.10%	4.77%	6,800	3.03%	2.16%
1974	596,700	4.83%	4.69%	7,000	2.94%	3.03%
1975	620,000	3.90%	4.28%	7,400	5.71%	3.90%
1976	646,800	4.32%	4.35%	7,400	0.00%	2.89%
1977	678,100	4.84%	4.36%	7,600	2.70%	2.81%
1978	719,300	6.08%	5.08%	7,900	3.95%	2.22%
1979	765,300	6.40%	5.77%	8,600	8.86%	5.17%
1980	800,508	4.60%	5.69%	9,449	9.87%	7.56%
1981	846,220	5.71%	5.57%	10,380	9.85%	9.53%
1982	870,970	2.92%	4.41%	10,920	5.20%	8.31%
1983	897,160	3.01%	3.88%	10,960	0.37%	5.14%
1984	922,580	2.83%	2.92%	11,190	2.10%	2.56%
1985	955,810	3.60%	3.15%	11,260	0.63%	1.03%
1986	993,220	3.91%	3.45%	11,220	-0.36%	0.79%
1987	1,035,040	4.21%	3.91%	11,490	2.41%	0.89%
1988	1,096,130	5.90%	4.68%	12,050	4.87%	2.31%
1989	1,162,340	6.04%	5.38%	12,580	4.40%	3.89%
1990	1,236,130	6.35%	6.10%	13,020	3.50%	4.26%
1991	1,297,910	5.00%	5.80%	13,500	3.69%	3.86%
1992	1,343,940	3.55%	4.96%	14,000	3.70%	3.63%
1993	1,398,760	4.08%	4.21%	14,510	3.64%	3.68%
1994	1,494,300	6.83%	4.82%	15,670	7.99%	5.11%
1995	1,582,390	5.90%	5.60%	16,270	3.83%	5.16%
1996	1,688,140	6.68%	6.47%	16,460	1.17%	4.33%
1997	1,779,850	5.43%	6.00%	17,520	6.44%	3.81%



### ***Age Distribution***

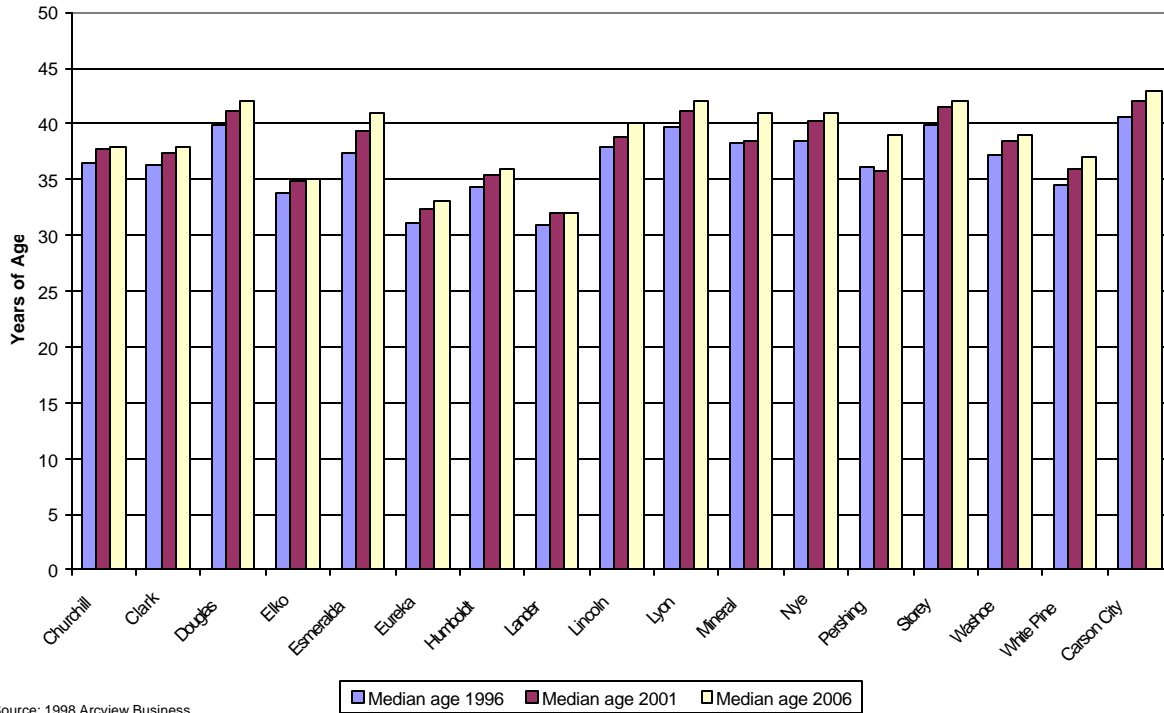
Using data from Business Analyst, the median age estimates for the years 1996, 2001, and 2006 are shown for all counties. The age distribution for Humboldt County for the years 1996, 2001, and 2006 is also shown. These age distributions are further broken down by gender.

- Figure 6 shows the estimated median age for each of Nevada's seventeen counties for 1996, 2001 and 2006.
- Table 4 shows that median age for Humboldt County is forecast to increase from 34 years of age in 1996 to 36 years of age in 2006. Humboldt County was the fourteenth oldest in median age of Nevada's 17 counties in 1996, which is estimated to remain unchanged in rank in 2006
- Table 5 shows that population for people 6 years of age to 17 years of age are forecast to increase from 3,749 in 1996 to 5,007 in 2006. Also, the retirement age group (persons 65 years of age and older) is forecast to increase from 1,220 in 1996 to 1,665 in 2006.
- Figures 7 through 9 show population by age by proportionate share from 1996 to 2006. Between 1996 and 2006, the number of persons in the age group 6 to 17 years of age will increase by 1,258, but will only increase in proportionate share from 23% to 21% for the same time period. The number of persons 65 years and older will increase by 445 persons between 1996 and 2006, but the proportionate share will remain constant at 7%.

Figures 10 through 13 show the distribution of population by gender for different age groups in Humboldt County for 1996, 2001 and 2006. Table 6 also shows the gender-age population values for Humboldt County from 1996, 2001 and 2006. Figures 10 through 13 and Table 6 show a large share of population in the working age group (35 to 54 years of age) and large share in the retirement age group (65 years of age and older). This shows the local employment opportunities in Humboldt County as well as growth in the number of persons retiring in Humboldt County.

## Age Distribution

**Figure 6: Median Age for Nevada Counties**



Source: 1998 Arcview Business

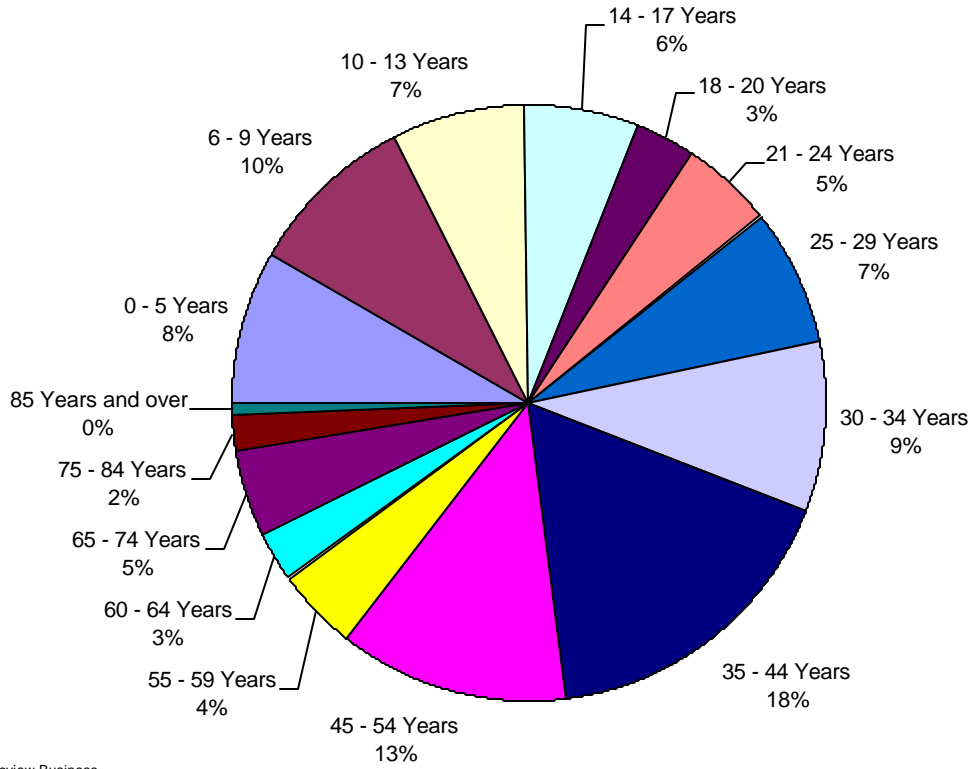
**Table 4. Median Population Age by County, 1996, 2001 and 2006**

County	1996	2001	2006
Churchill	37	38	38
Clark	36	37	38
Douglas	40	41	42
Elko	34	35	35
Esmeralda	37	39	41
Eureka	31	32	33
Humboldt	34	35	36
Lander	31	32	32
Lincoln	38	39	40
Lyon	40	41	42
Mineral	38	38	41
Nye	38	40	41
Pershing	36	36	39
Storey	40	42	42
Washoe	37	39	39
White Pine	35	36	37
Carson City	41	42	43

**Table 5. Population by Age Humboldt County: 1996, 2001 and 2006**

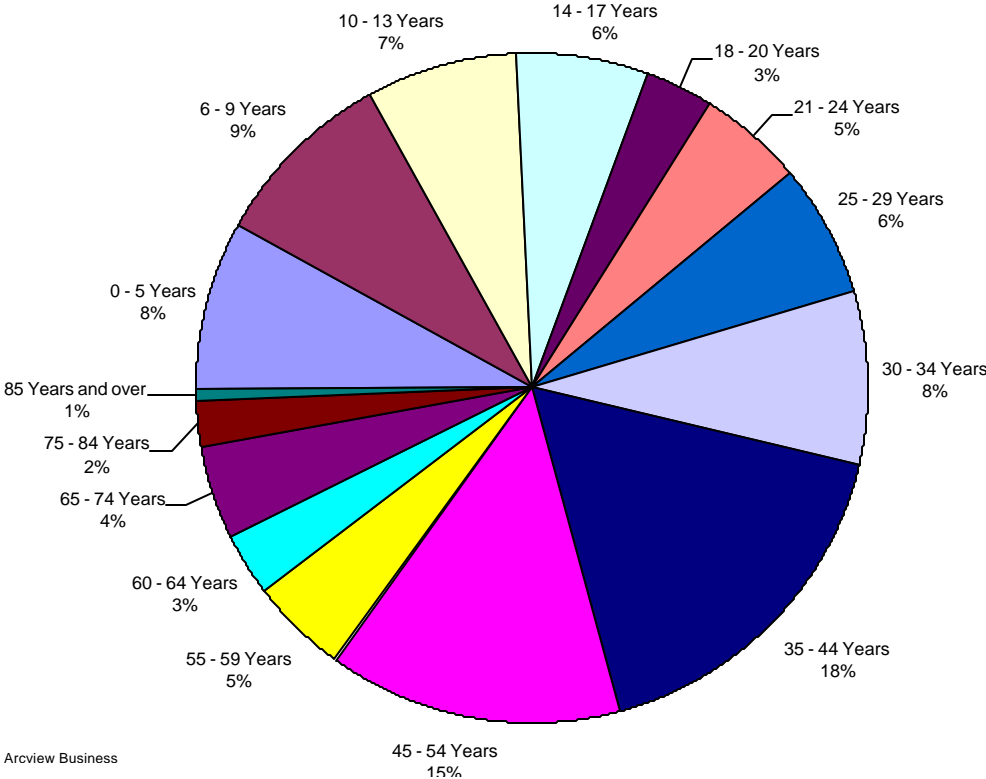
<b>Age</b>	<b>Persons 1996</b>	<b>Persons 2001</b>	<b>Persons 2006</b>
0 to 5	1,414	1,571	1,777
6 to 9	1,534	1,758	1,912
10 to 13	1,198	1,453	1,633
14 to 17	1,017	1,245	1,462
18 to 20	550	680	810
21 to 24	820	1,006	1,204
25 to 29	1,248	1,282	1,540
30 to 34	1,545	1,612	1,630
35 to 44	2,912	3,397	3,547
45 to 54	2,085	2,825	3,465
55 to 59	705	960	1,400
60 to 64	473	593	790
65 to 74	791	874	1,010
75 to 84	355	448	521
85 Years and over	74	102	134

**Figure 7. Age of Population in Humboldt County, 1996**



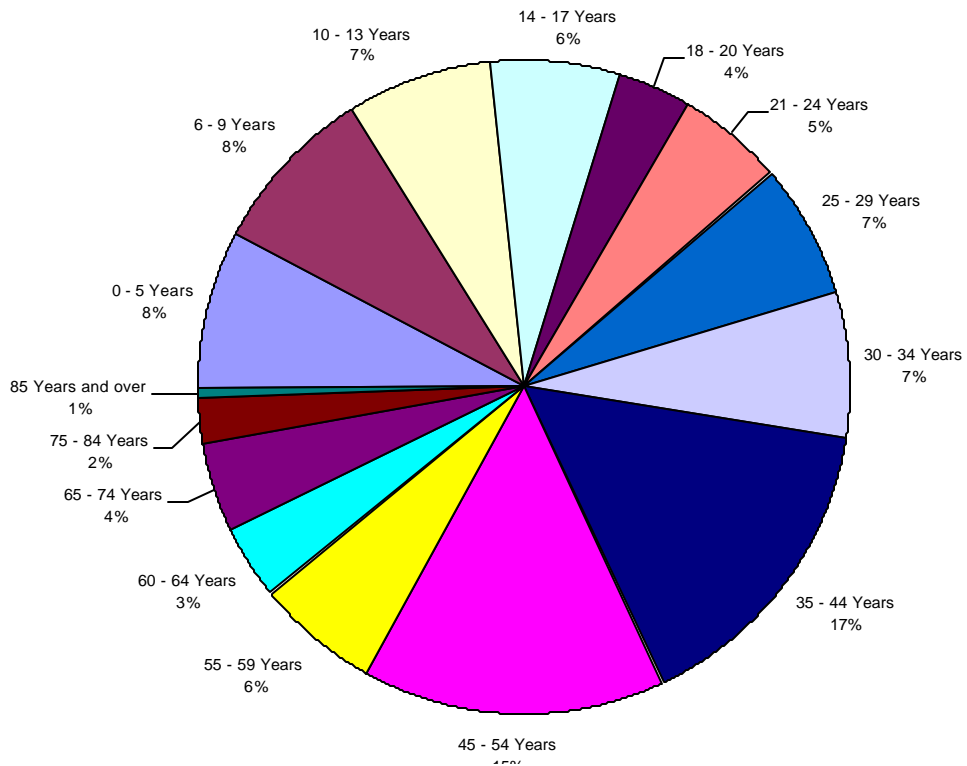
Source: 1998 Arcview Business

**Figure 8. Age of Population in Humboldt County, 2001**

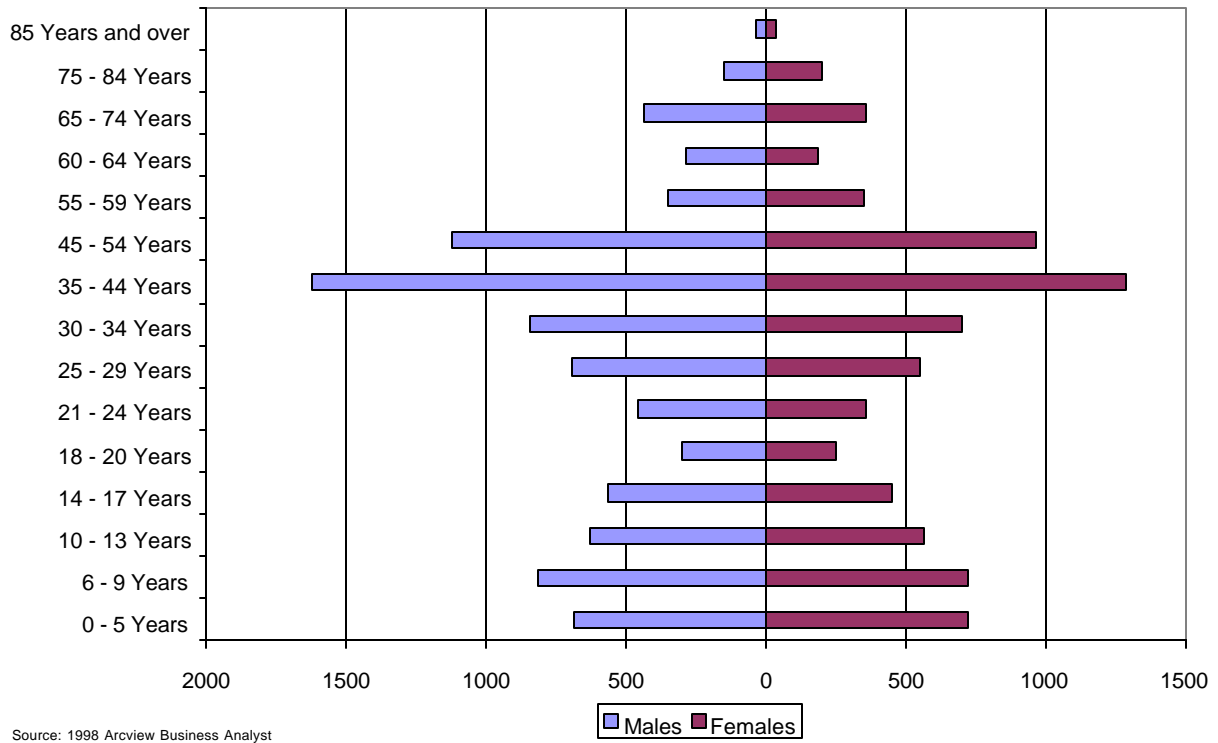


Source: 1998 Arcview Business

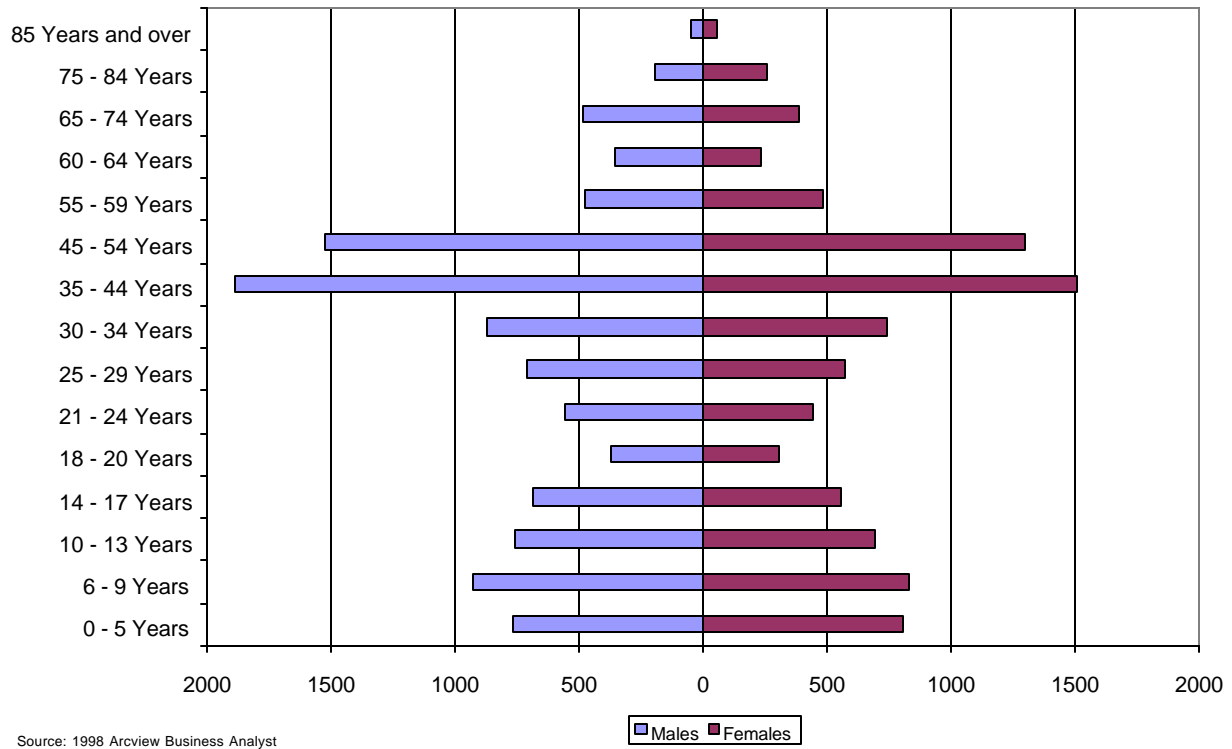
**Figure 9. Age of Population in Humboldt County, 2006**



**Figure 10. Population by Gender and Age in Humboldt County, 1996**

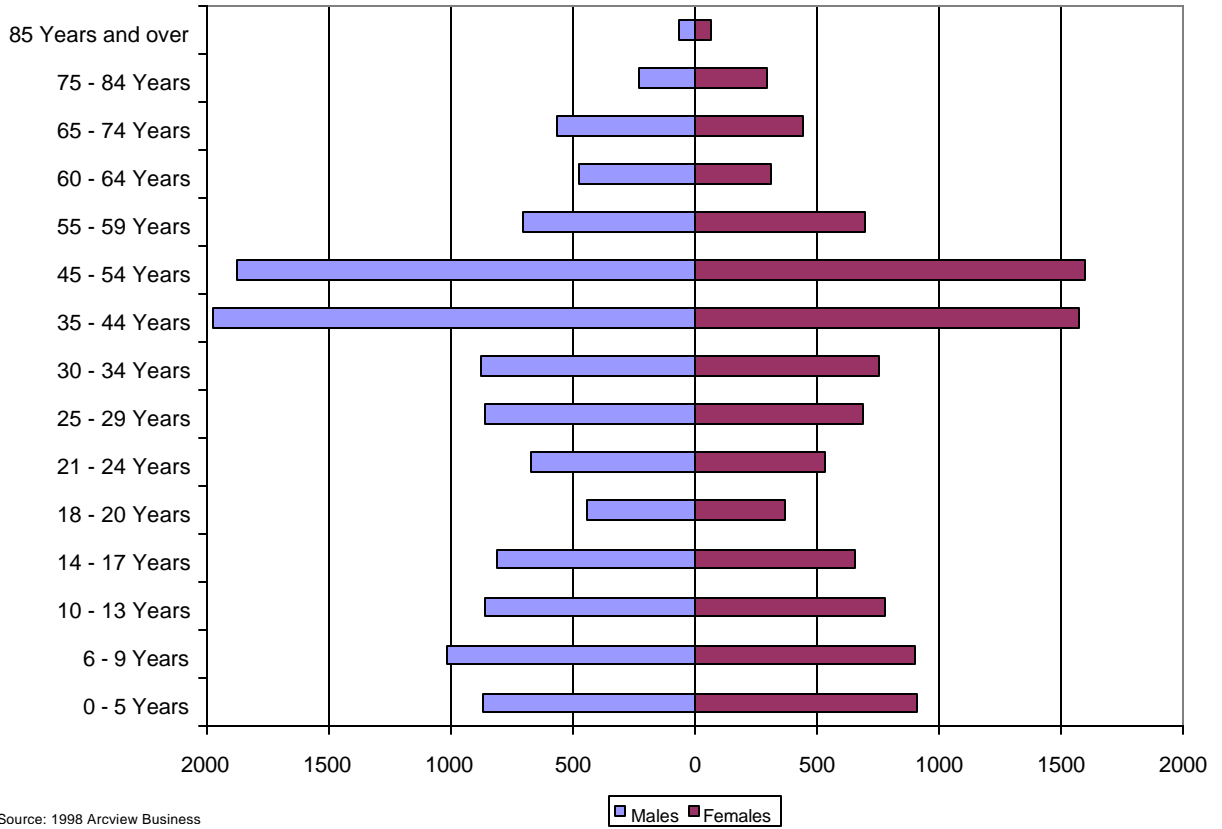


**Figure 11. Projected Population by Gender and Age in Humboldt County, 2001**





**Figure 12. Projected Population by Gender and Age in Humboldt County, 2006**



**Table 6. Population by Gender and Age Humboldt County, 1996 and Projections for 2001 and 2006**

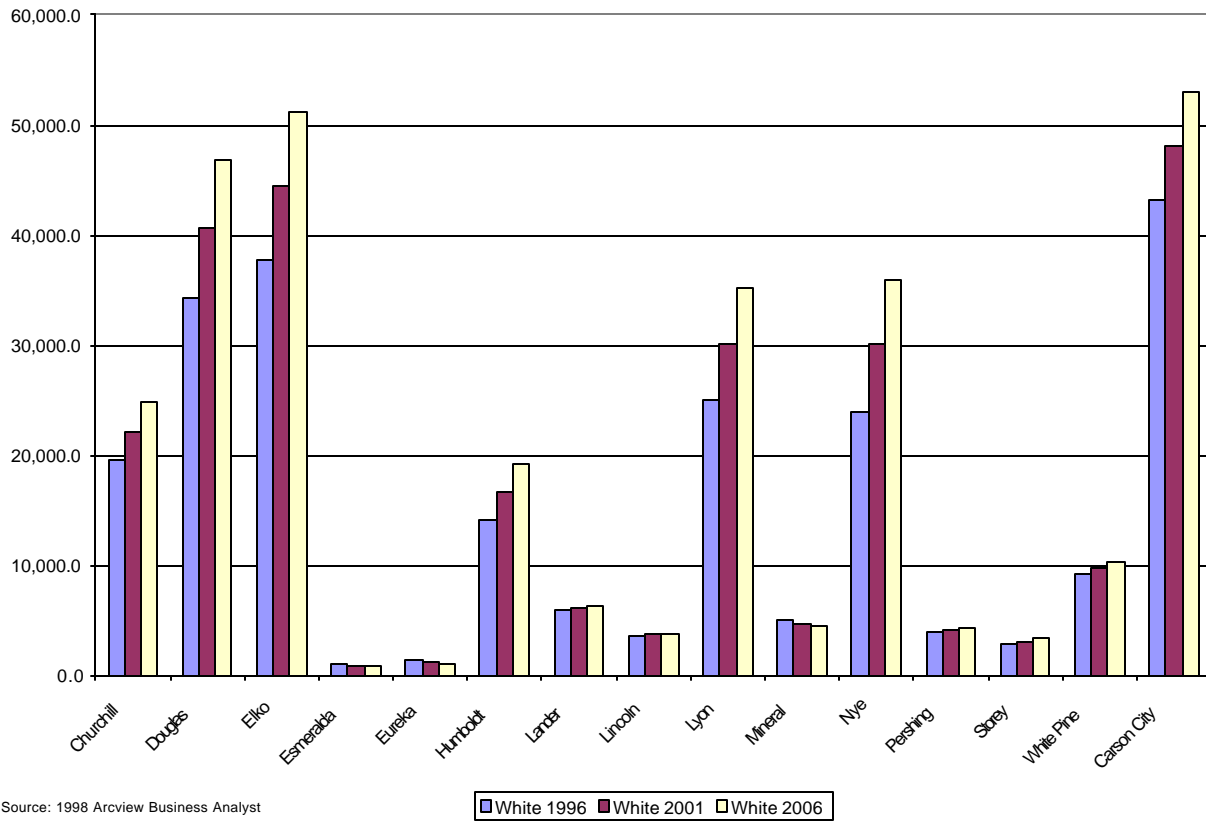
Years	1996		2001		2006	
	Males	Females	Males	Females	Males	Females
0 to 5	688	726	765	806	866	911
6 to 9	814	720	932	826	1,014	898
10 to 13	629	569	763	690	857	776
14 to 17	563	454	688	557	809	653
18 to 20	301	249	372	308	443	367
21 to 24	460	360	561	445	671	533
25 to 29	697	551	714	568	856	684
30 to 34	840	705	873	739	879	751
35 to 44	1,621	1,291	1,893	1,504	1,971	1,576
45 to 54	1,120	965	1,525	1,300	1,870	1,595
55 to 59	352	353	479	481	703	697
60 to 64	284	189	358	235	477	313
65 to 74	436	355	485	389	567	443
75 to 84	151	204	193	255	228	293
85 Years and over	34	40	49	53	65	69

### ***Population by Race/Ethnicity***

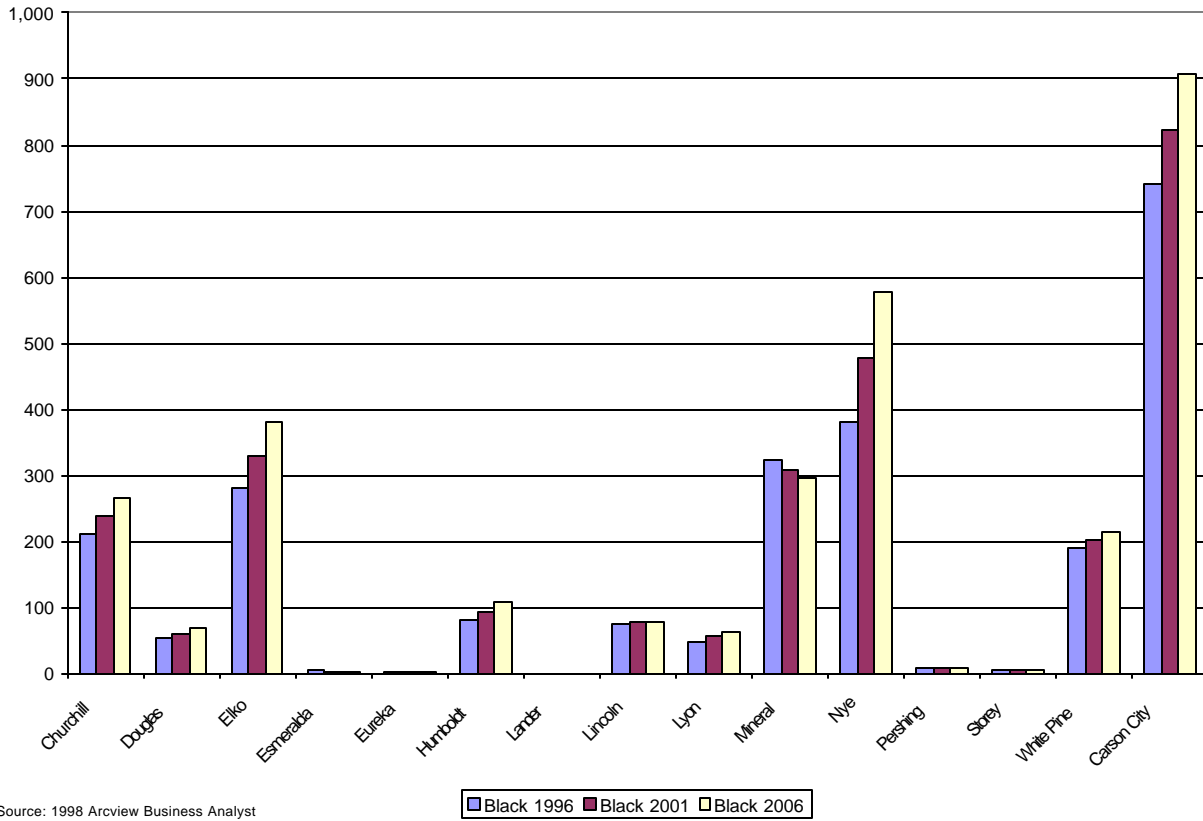
Using data from Business Analyst, race and ethnicity charts are shown for all counties except Clark and Washoe. These data show the number of persons in each racial group and the percent of total population that is Hispanic in 1996, 2001, and 2006.

- Figures 13 through 18 show population estimates for the 15 non-metropolitan counties by race and ethnicity for 1996, 2001 and 2006.
- Table 7 and 8 shows the population values for the fifteen non-metropolitan counties by race/ethnicity for 1996, 2001 and 2006.
- Table 7 shows the following for Humboldt County:
  - i. White population is forecast to increase from 14,055 in 1996 to 19,229 in 2006 or a 36.8 percent increase.
  - ii. Black population is forecast to increase from 80 in 1996 to 108 in 2006 or a 35 percent increase.
  - iii. American Indian or Native American population is forecast to increase from 874 in 1996 to 1,110 in 2006 or 27 percent increase.
  - iv. Asian or Pacific Islander population is forecast to increase from 102 in 1996 to 179 in 2006 or a 75.5 percent increase.
  - v. Other race population is forecast to increase by 1,610 in 1996 to 2,209 in 2006 or a 37.2 percent increase.
  - vi. Hispanic population is forecast to increase from 3,377 in 1996 to 5,127 in 2006 or a 51.8 percent increase.
  - vii. The Hispanic population's proportionate share of Humboldt County population is forecast to increase from 20.20 percent in 1996 to 22.45 percent in 2006.

**Figure 13. Nevada Non-Metropolitan County White Population for 1996, 2001 and 2006**

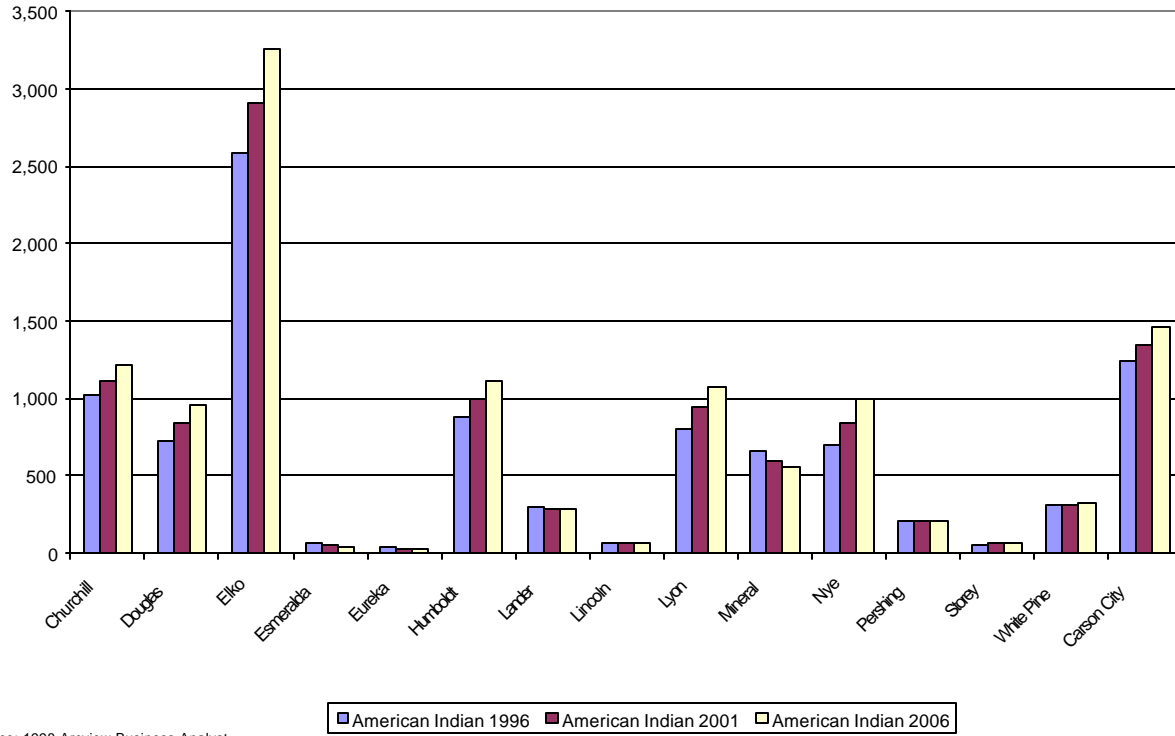


**Figure 14. Nevada Non-Metropolitan Black Population Forecast for 1996, 2001 and 2006.**



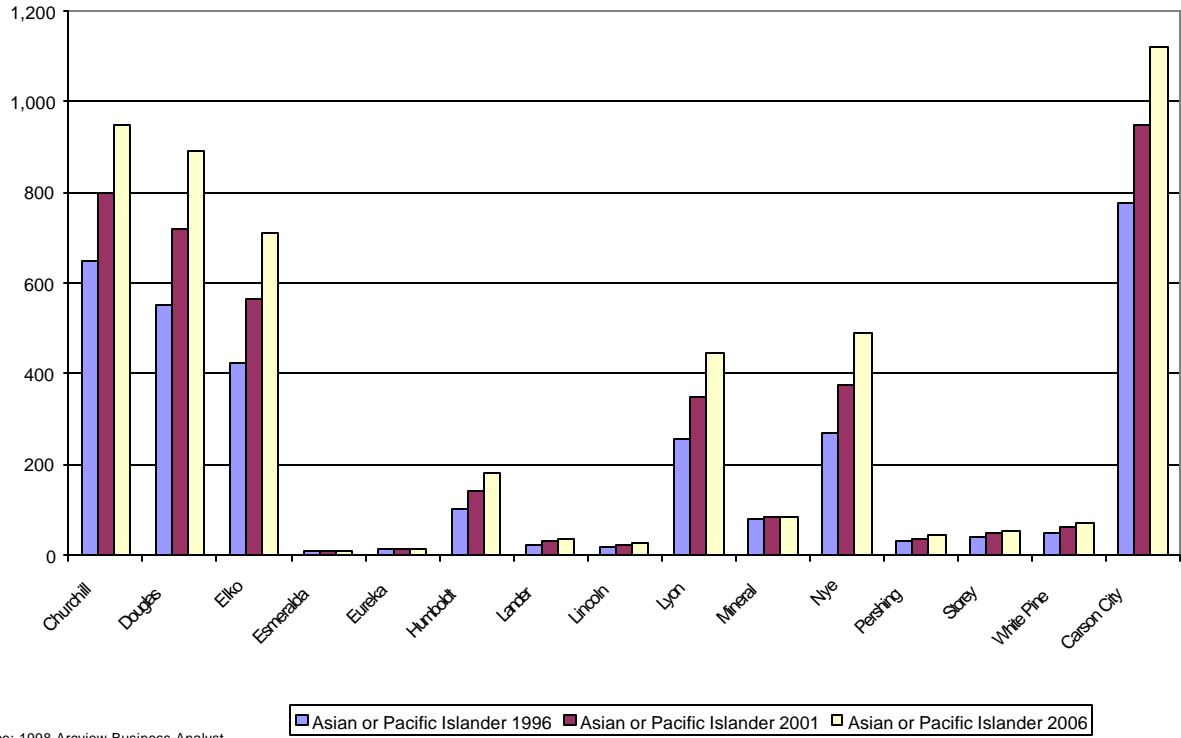
Source: 1998 Arcview Business Analyst

**Figure 15. Nevada Non-Metropolitan County Native American Population Forecast for 1996, 2001 and 2006.**



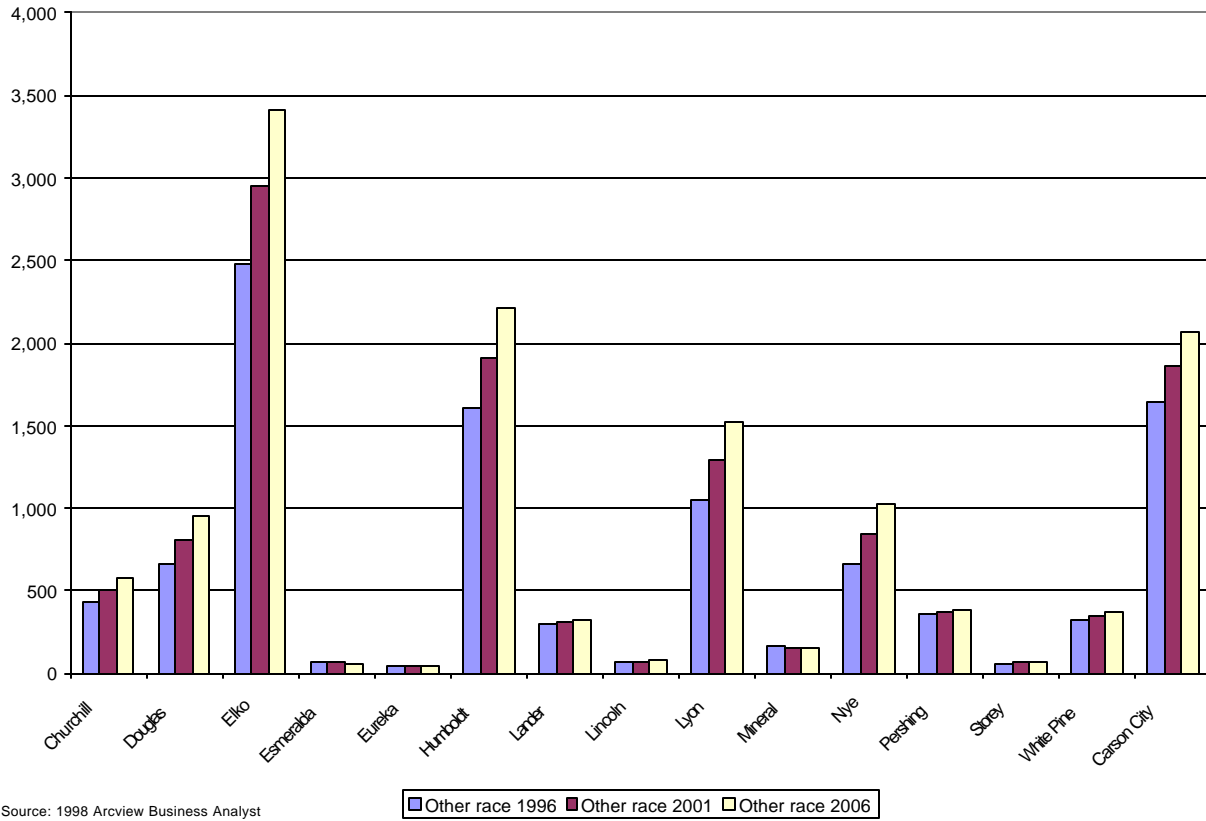
Source: 1998 Arcview Business Analyst

**Figure 16. Nevada Non-Metropolitan County Asian or Pacific Islander Population Forecast for 1996, 2001 and 2006**



Source: 1998 Arcview Business Analyst

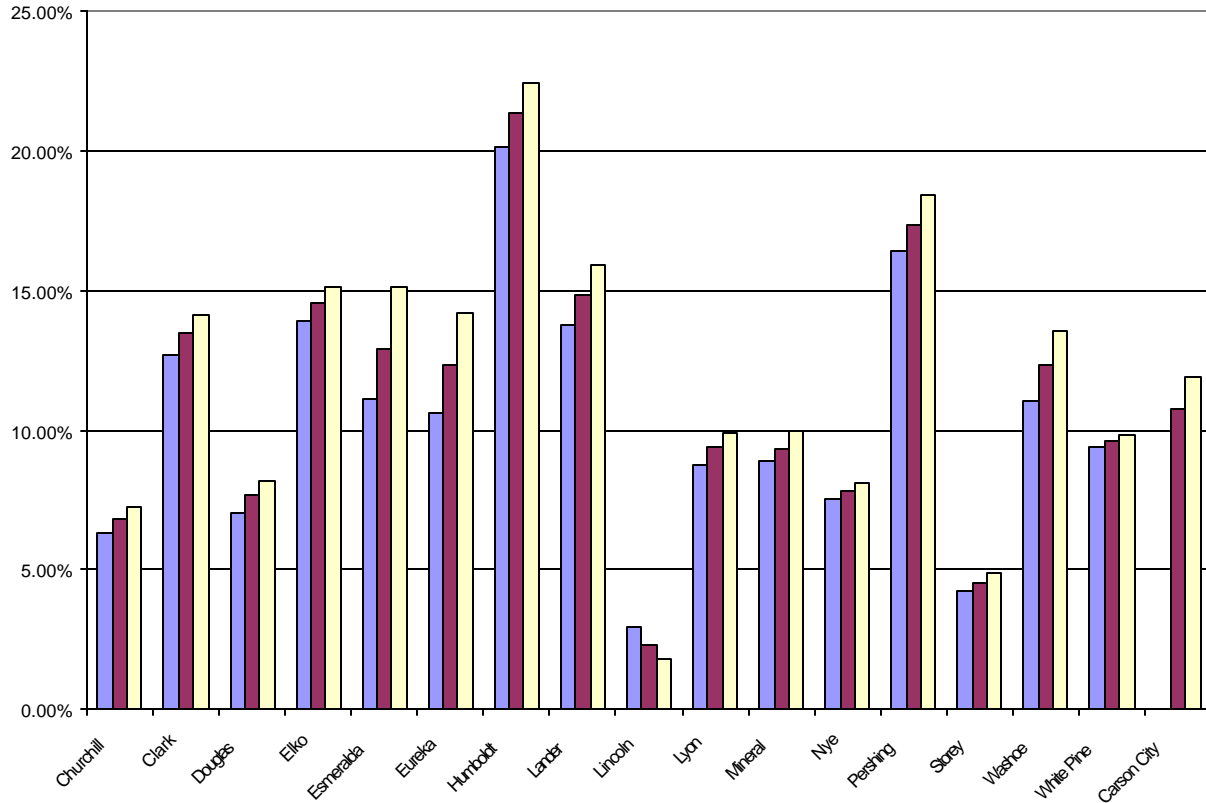
**Figure 17. Nevada Non-Metropolitan County Forecast for Other Races for 1996, 2001 and 2006**



Source: 1998 Arcview Business Analyst



**Figure 18. Nevada Non-Metropolitan County Hispanic Proportionate Population, 1996**



Source: 1998 Arcview Business Analyst

**Table 7. Population by Race/Ethnicity by County for 1996, 2001 and 2006. (Churchill through Lincoln Counties)**

	Churchill	Clark	Douglas	Elko	Esmeralda	Eureka	Humboldt	Lander	Lincoln
White 1996	19,484	845,972	34,204	37,656	1,012	1,300	14,055	5,920	3,636
White 2001	22,177	1,039,453	40,587	44,533	886	1,180	16,671	6,076	3,665
White 2006	24,789	1,228,272	46,827	51,248	775	1,068	19,229	6,218	3,688
Black 1996	210	96,987	53	279	4	2	80	0	76
Black 2001	237	119,539	59	330	3	2	94	0	77
Black 2006	264	142,159	68	381	3	2	108	0	78
American Indian 1996	1,025	9,204	722	2,586	60	35	874	291	58
American Indian 2001	1,116	11,413	835	2,913	50	31	991	285	58
American Indian 2006	1,218	13,613	952	3,261	42	28	1,110	283	58
Asian or Pacific Islander 1996	649	41,766	550	424	8	12	102	22	19
Asian or Pacific Islander 2001	797	54,890	717	566	8	12	140	29	23
Asian or Pacific Islander 2006	948	68,635	891	711	8	12	179	35	26
Other race 1996	430	50,495	658	2,479	73	43	1,610	299	69
Other race 2001	502	62,494	805	2,948	65	40	1,910	309	71
Other race 2006	574	74,403	953	3,413	56	38	2,209	319	74
Persons of Hispanic Origin 1996	1,386	132,464	2,555	6,053	129	148	3,377	901	115
Persons of Hispanic Origin 2001	1,698	173,511	3,306	7,465	131	156	4,238	994	89
Persons of Hispanic Origin 2006	2,022	215,844	4,083	8,935	134	163	5,127	1,092	71
Percent Population Hispanic 1996	6.36%	12.68%	7.06%	13.94%	11.15%	10.63%	20.20%	13.79%	2.98%
Percent Population Hispanic 2001	6.84%	13.47%	7.69%	14.55%	12.94%	12.33%	21.40%	14.84%	2.29%
Percent Population Hispanic 2006	7.28%	14.13%	8.22%	15.14%	15.16%	14.20%	22.45%	15.93%	1.81%

**Table 8. Population by Race/Ethnicity by County for 1996, 2001 and 2006. (Lyon through White Pine and Carson City)**

	Lyon	Mineral	Nye	Pershing	Storey	Washoe	White Pine	Carson City
White 1996	24,937	4,927	23,968	3,988	2,751	263,331	9,244	43,194
White 2001	30,150	4,705	30,028	4,133	3,025	292,710	9,807	48,176
White 2006	35,252	4,471	35,974	4,270	3,291	321,234	10,348	53,030
Black 1996	48	323	382	7	5	6,062	189	740
Black 2001	55	308	479	7	5	6,686	201	823
Black 2006	63	296	576	7	5	7,325	213	908
American Indian 1996	805	662	698	203	57	5,585	305	1,246
American Indian 2001	939	598	845	202	61	6,068	312	1,346
American Indian 2006	1,077	550	996	202	66	6,589	325	1,456
Asian or Pacific Islander 1996	257	79	267	31	39	13,135	50	778
Asian or Pacific Islander 2001	348	82	376	37	47	15,621	62	949
Asian or Pacific Islander 2006	446	84	491	43	55	18,141	72	1,122
Other race 1996	1,055	161	660	353	57	10,831	326	1,643
Other race 2001	1,293	155	844	368	65	12,188	352	1,862
Other race 2006	1,528	151	1,029	382	73	13,523	376	2,073
Persons of Hispanic Origin 1996	2,368	549	1,952	752	123	32,990	948	4,545
Persons of Hispanic Origin 2001	3,082	548	2,547	826	146	41,261	1,030	5,737
Persons of Hispanic Origin 2006	3,812	553	3,161	903	171	49,880	1,116	6,968
Percent Population Hispanic 1996	8.74%	8.92%	7.51%	16.41%	4.23%	11.04%	9.37%	9.55%
Percent Population Hispanic 2001	9.40%	9.37%	7.82%	17.40%	4.56%	12.38%	9.60%	10.79%
Percent Population Hispanic 2006	9.94%	9.96%	8.09%	18.41%	4.90%	13.60%	9.85%	11.89%

## Chapter 2: Labor Force and Employment

This chapter covers labor force and employment data for Humboldt County compared to the state of Nevada. Labor force and employment data are depicted as a time series to ascertain trends in labor force and employment.

### *About Labor Force and Employment Data*

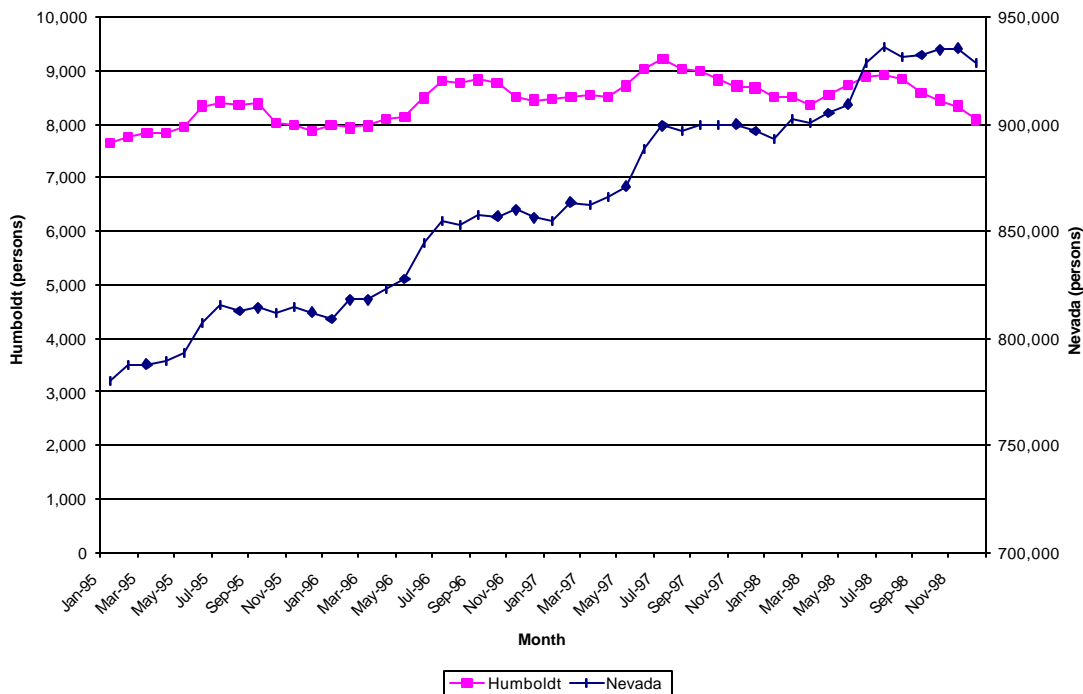
The data included in this section were obtained from the Nevada Department of Employment, Training & Rehabilitation (DETR) web site at <http://www.state.nv.us/detr/>. For additional information or updated data please visit DETR's web site.

- Labor force is defined as all members of the civilian noninstitutional population who are eligible for inclusion in the labor force, and those 16 years of age and older who have jobs or are actively seeking employment. All others or those who don't have a job are counted as "not in the labor force."
- Figure 19 and Table 9 shows monthly labor force estimates for the Humboldt County and the state of Nevada. For Humboldt County, labor force estimates increased from 7,650 in January 1995 to 8,080 in December 1998 or a 5.6 percent increase in labor force employment. Humboldt County's labor force growth has been generally higher compared to the state, where labor force increased from 780,000 in January 1995 to 928,800 in December 1998, or a 19.1 percent increase.
- Employment is defined as the number of persons employed full- or part-time. These values are in jobs not full-time equivalents.
- Figure 20 and Table 9 show employment trends for Humboldt County and the state of Nevada. For Humboldt County employment increased from 7,160 in January 1995 to 7,730 in December 1998, or a increase in county employment of 8 percent. For Humboldt County employment seems to reach lows in December of 1996 and 1997, which may relate to reduction in agricultural activities. For the state of Nevada, employment increased from 731,900 in January 1995 to 902,400 in 1998 or a 23.8 percent increase. State of Nevada population can be characterized as increasing at a fairly constant rate with fewer counter-cyclical moves.
- The total unemployed includes persons who are not employed, but are actively seeking employment, and those who have been laid off and are waiting to be called back to work.
- Figure 21 and Table 9 show the total unemployed for Humboldt County and the state of Nevada. The number of unemployed in Humboldt County decreased from 490 in January 1995 to 350 in December 1998, or a decrease of 28.6 percent. For the state of Nevada, total unemployed decreased from 48,100 in January 1995 to 26,400 in December 1998, or a decrease of 48.1 percent.

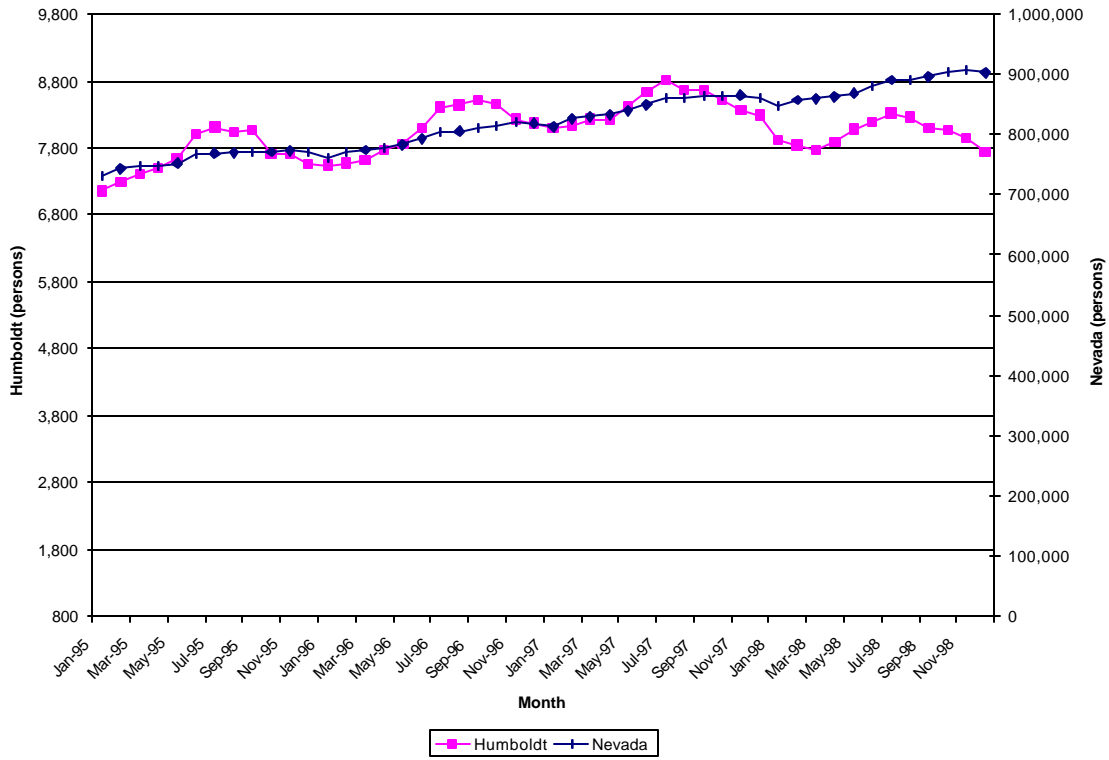
- Unemployment rate is the total number of unemployed persons divided by the labor force. The unemployment rate can also be interpreted as percentage of the labor force not employed or working.

- Figure 22 and Table 9 show monthly unemployment rates for Humboldt County and the state of Nevada. It is interesting that the unemployment rate for Humboldt County from 1995 to 1997 was lower than the state value. The unemployment rate varied from 5.5 percent in January 1996 to 4.7 percent in November 1998. For the state of Nevada, the unemployment rate has been generally higher than for Humboldt County except for 1998. State unemployment rate was 6.2 percent in January 1995 and rose again to a high of 6.2 percent in June 1996. The lowest state unemployment rate of 2.8 percent occurred in December 1998. The state unemployment rate for December 1998 was 1.5 percentage points lower than the December 1998 unemployment rate for Humboldt County.

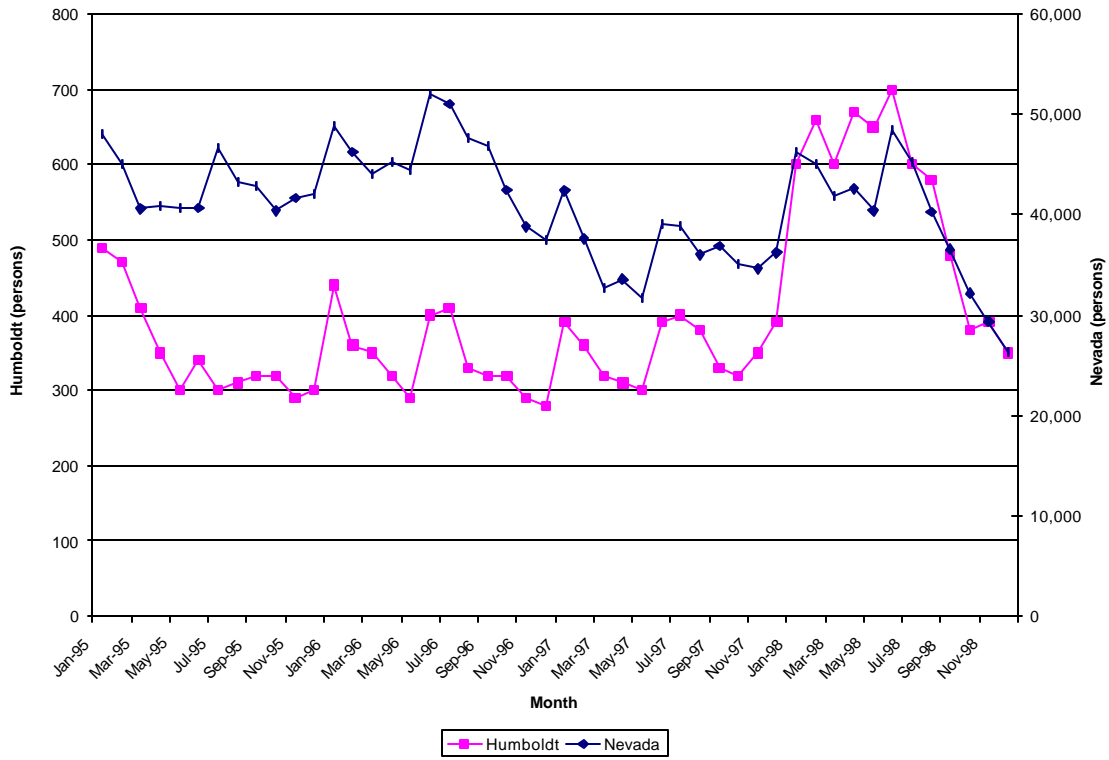
**Figure 19. Total Labor Force for Humboldt County and the State of Nevada, 1995 to 1998**



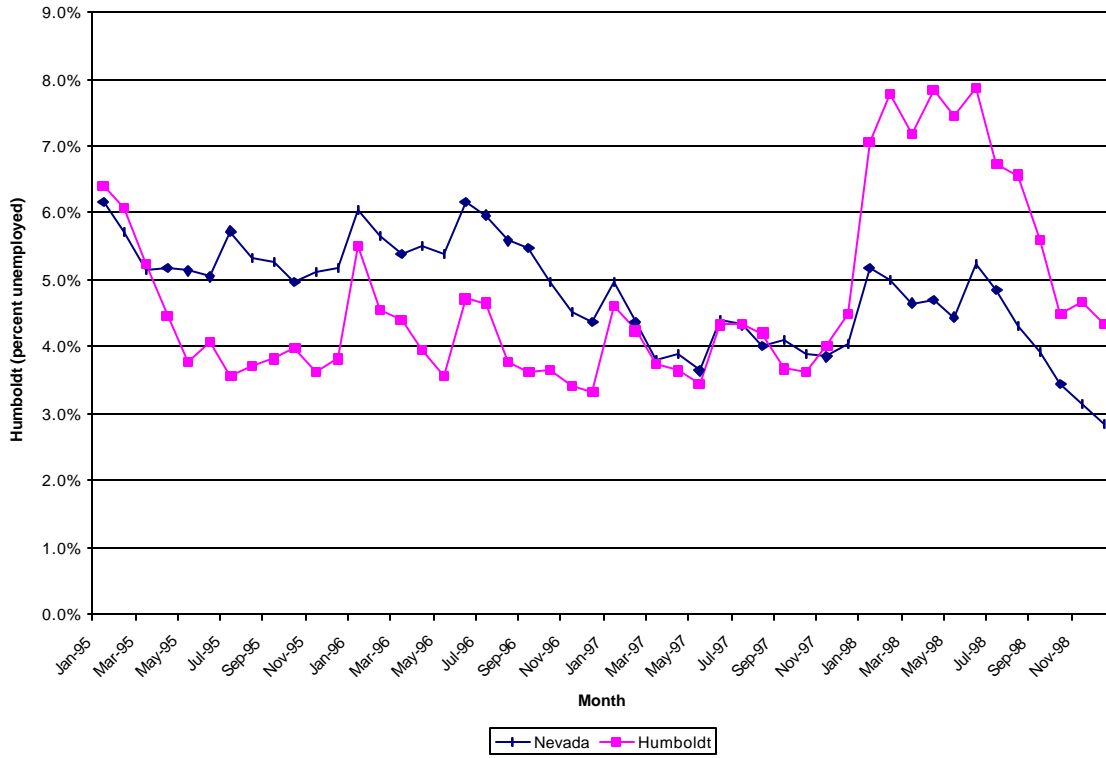
**Figure 20. Total Employment for Humboldt County and the State of Nevada, 1995 to 1998**



**Figure 21. Total Unemployed for Humboldt County and the State of Nevada, 1995 to 1998**



**Figure 22. Unemployment Rate for Humboldt County and the State of Nevada, 1995 to 1998**





**Table 9. Humboldt County Labor Force January 1995 to December 1998.**

Month	Labor Force		Total Employment		Total Unemployment		Unemployment Rate	
	Nevada	Humboldt	Nevada	Humboldt	Nevada	Humboldt	Nevada	Humboldt
Jan-95	780,000	7,650	731,900	7,160	48,100	490	6.2%	6.4%
Feb-95	787,800	7,750	742,800	7,280	45,000	470	5.7%	6.1%
Mar-95	787,900	7,830	747,300	7,420	40,600	410	5.2%	5.2%
Apr-95	789,200	7,840	748,300	7,490	40,900	350	5.2%	4.5%
May-95	793,300	7,950	752,600	7,650	40,700	300	5.1%	3.8%
Jun-95	807,200	8,340	766,500	8,000	40,700	340	5.0%	4.1%
Jul-95	815,800	8,410	769,100	8,110	46,700	300	5.7%	3.6%
Aug-95	812,700	8,350	769,400	8,040	43,300	310	5.3%	3.7%
Sep-95	814,100	8,380	771,200	8,060	42,900	320	5.3%	3.8%
Oct-95	812,100	8,030	771,700	7,710	40,400	320	5.0%	4.0%
Nov-95	814,600	7,990	773,000	7,700	41,600	290	5.1%	3.6%
Dec-95	812,200	7,860	770,100	7,560	42,100	300	5.2%	3.8%
Jan-96	809,300	7,980	760,400	7,540	48,900	440	6.0%	5.5%
Feb-96	817,900	7,930	771,600	7,570	46,300	360	5.7%	4.5%
Mar-96	817,900	7,970	773,900	7,620	44,000	350	5.4%	4.4%
Apr-96	822,800	8,090	777,600	7,770	45,200	320	5.5%	4.0%
May-96	827,400	8,140	782,900	7,850	44,500	290	5.4%	3.6%
Jun-96	844,800	8,490	792,700	8,090	52,100	400	6.2%	4.7%
Jul-96	854,900	8,820	803,900	8,410	51,000	410	6.0%	4.6%
Aug-96	853,200	8,770	805,600	8,440	47,600	330	5.6%	3.8%
Sep-96	857,500	8,830	810,600	8,510	46,900	320	5.5%	3.6%
Oct-96	857,100	8,770	814,600	8,450	42,500	320	5.0%	3.6%
Nov-96	859,900	8,520	821,100	8,230	38,800	290	4.5%	3.4%
Dec-96	856,200	8,450	818,700	8,170	37,500	280	4.4%	3.3%
Jan-97	855,000	8,480	812,600	8,090	42,400	390	5.0%	4.6%
Feb-97	863,500	8,500	825,900	8,140	37,600	360	4.4%	4.2%
Mar-97	862,300	8,550	829,600	8,230	32,700	320	3.8%	3.7%
Apr-97	866,000	8,520	832,400	8,210	33,600	310	3.9%	3.6%
May-97	871,000	8,720	839,300	8,420	31,700	300	3.6%	3.4%
Jun-97	888,400	9,020	849,300	8,630	39,100	390	4.4%	4.3%
Jul-97	899,300	9,210	860,400	8,810	38,900	400	4.3%	4.3%
Aug-97	896,500	9,040	860,500	8,660	36,000	380	4.0%	4.2%
Sep-97	899,800	9,000	862,900	8,670	36,900	330	4.1%	3.7%
Oct-97	899,800	8,830	864,700	8,510	35,100	320	3.9%	3.6%
Nov-97	900,000	8,710	865,400	8,360	34,600	350	3.8%	4.0%
Dec-97	897,100	8,680	860,900	8,290	36,200	390	4.0%	4.5%
Jan-98	892,900	8,510	846,700	7,910	46,200	600	5.2%	7.1%
Feb-98	902,800	8,500	857,700	7,840	45,100	660	5.0%	7.8%
Mar-98	900,900	8,360	859,000	7,760	41,900	600	4.7%	7.2%
Apr-98	905,100	8,560	862,500	7,890	42,600	670	4.7%	7.8%
May-98	909,400	8,730	869,000	8,080	40,400	650	4.4%	7.4%
Jun-98	928,500	8,890	880,000	8,190	48,500	700	5.2%	7.9%
Jul-98	936,000	8,920	890,700	8,320	45,300	600	4.8%	6.7%
Aug-98	931,100	8,840	890,900	8,260	40,200	580	4.3%	6.6%
Sep-98	932,300	8,570	895,700	8,090	36,600	480	3.9%	5.6%
Oct-98	934,700	8,450	902,500	8,070	32,200	380	3.4%	4.5%
Nov-98	935,600	8,340	906,200	7,950	29,400	390	3.1%	4.7%
Dec-98	928,800	8,080	902,400	7,730	26,400	350	2.8%	4.3%

### **Chapter 3: Personal Income (REIS)**

The personal income data in this report were taken from the Regional Economic Information System May 1998. This is a data CD that is published annually by the U.S. Department of Commerce, Bureau of Economic Analysis, for all states and counties in the United States. The REIS provides annual estimates from 1969 to 1996. For more information about the CD you may visit the BEA's web site at <http://www.bea.doc.gov>

#### **Table CA05 -- Personal Income by Major Source and Earnings by Industry**

Personal income (Table CA05) is a measure of income received; therefore, estimates of State and local area personal income reflect the residence of the income recipients. The adjustment for residence is made to wages and salaries, other labor income, and personal contributions for social insurance, with minor exceptions, to place them on a place-of-residence (where-received) basis. The adjustment is necessary because these components of personal income are estimated from data that are reported by place of work (where earned). The estimates of proprietors' income, although presented on the table as part of place-of-work earnings, are largely by place of residence; no residence adjustment is made for this component. Net earnings by place of residence is calculated by subtracting personal contributions for social insurance from earnings by place of work and then adding the adjustment for residence, which is an estimate of the net inflow of the earnings of interarea commuters. The estimates of dividends, interest, and rent, and of transfer payments are prepared by place of residence only.

Finally the REIS data reports income by economic sector. These sectoral income estimates are by place of work. The sectoral income estimates are derived for agricultural; mining; construction; manufacturing; transportation and public utilities; wholesale trade; retail trade; finance, insurance and real estate; services; federal government; state government; and local government sectors.

- Figure 23 shows nominal personal income for Humboldt County and the State of Nevada. Tabular values are shown in Tables 11, 11, 12 and 13. Humboldt County total nominal personal income rose from \$149,600,000 in 1987 to \$374,243,000 in 1996 or an increase in nominal Humboldt County personal income of 150 percent. Using the GDP price deflator where 1992 = 100, real total personal income in Humboldt County increased from \$180,111,000 in 1987 to \$341,681,000 in 1996 or an increase in real personal income of 90 percent. State of Nevada total nominal personal income rose from \$16,851,786,000 in 1987 to \$41,715,703,000 in 1996 or an increase of 147.5 percent. Adjusting for inflation, state of Nevada real personal income increased from \$20,288,690,000 in 1987 to \$38,086,098 in 1996 or an increase in state real personal income of 87.7 percent.

- Figure 24 shows non-farm nominal personal income for Humboldt County and the state of Nevada. Tabular values are shown in Tables 10, 11, 12 and 13. Humboldt County nominal non-farm personal income rose from \$144,030,000 in 1987 to \$361,782,000 in 1996 or an increase in nominal Humboldt County non-farm income of 151 percent. Using the GDP price deflator where 1992 = 100, real non-farm income in Humboldt County increased from \$173,405,000 in

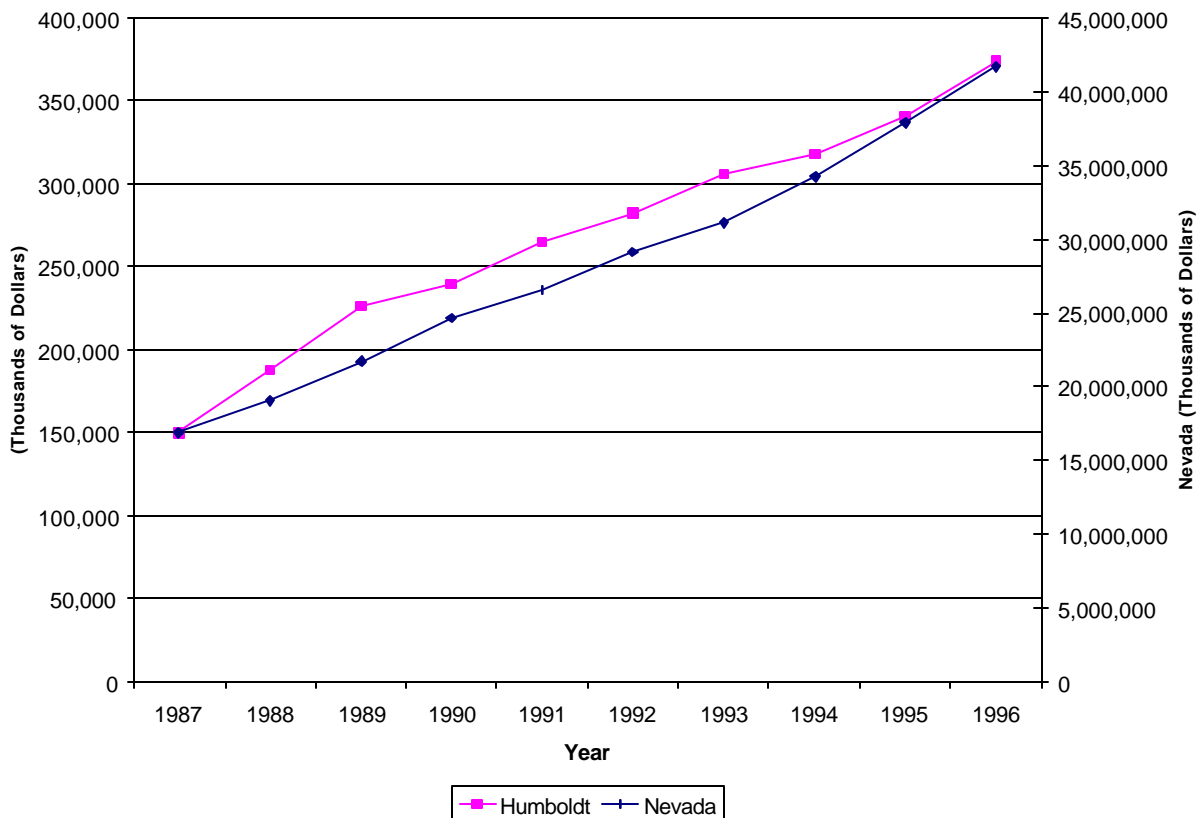
1987 to \$330,304,000 in 1996, or an increase in real Humboldt County non-farm income of 91 percent.

- State of Nevada nominal non-farm income rose from \$16,807,085,000 in 1987 to \$41,715,703,000 in 1996 or an increase in state non-farm income of 148.2 percent. Adjusting for inflation, state of Nevada real non-farm income increased from \$20,234,872,000 in 1987 to \$38,086,098,000 in 1996 or an increase in state non-farm income of 88.2 percent.
- Figure 25 shows nominal farm income for Humboldt County and the state of Nevada. Tabular values are shown in Tables 10, 11, 12 and 13. Humboldt County nominal farm income rose from \$5,570,000 in 1987 to \$12,461,000 in 1996 or an increase in nominal Humboldt County farm income of 124 percent. Using the GDP price deflator where 1992 = 100, real farm income in Humboldt County increased from \$6,706,000 in 1987 to \$11,337,000 in 1996 or an increase in real Humboldt County farm income of 70 percent.
- State of Nevada farm income rose from \$44,701,000 in 1987 to \$52,734,000 in 1996 or an increase in state farm income of 18.0 percent. Adjusting for inflation, state of Nevada real farm income decreased from \$53,818,000 in 1987 to \$48,146,000 in 1996 or a decrease in state real farm income of 10.5 percent.
- Figure 26 shows the population estimates used by REIS in the calculations of their per capita income as shown in Figure 27.
- Figure 27 shows nominal per capita income for Humboldt County and the state of Nevada. Tabular values are shown in Tables 10, 11, 12 and 13. Humboldt County nominal per capita income rose from \$13,898 in 1987 to \$22,697 in 1996 or an increase in nominal Humboldt County per capita income of 63 percent. Using GDP price deflator where 1992 = 100, Humboldt County real per capita income increased from \$16,732 in 1987 to \$20,722 in 1996 or an increase in real per capita income for Humboldt County of 24 percent. State of Nevada nominal per capita income rose from \$16,467 in 1987 to \$26,059 in 1996 or an increase in state real per capita income of 58.2 percent. Adjusting for inflation, state of Nevada real per capita income increased from \$19,825 in 1987 to \$23,792 in 1996 or an increase in state per capita income of 20.0 percent.
- Figure 28 shows components of total personal income for Humboldt County from 1987 to 1996. The tabular values are shown in Table 10 and 11. The three components are net earnings by place of residence; dividends, interest and rent; and transfer payments. The last two segments often represent income of the retired population. In 1987, net earnings by place of residence in Humboldt County accounted for 73 percent of total personal earnings that increased to 80.1 percent of total personal earnings in 1996. As a proportionate share of Humboldt County total personal income; dividends, interest and rent; proportionate share decreased from 16 percent in 1987 to 10.5 percent in 1996. Proportionate share of Humboldt County total personal income from transfer payments decreased from 11 percent in 1987 to 9.3 percent in 1996. For the state of Nevada, net industry earnings' proportionate share remained fairly constant decreasing from 69.1 percent in 1987 to 68.0 percent in 1996. The proportionate share of total state personal income, from dividends, interest and rent increased slightly from 17.7 percent in 1987 to 18.3

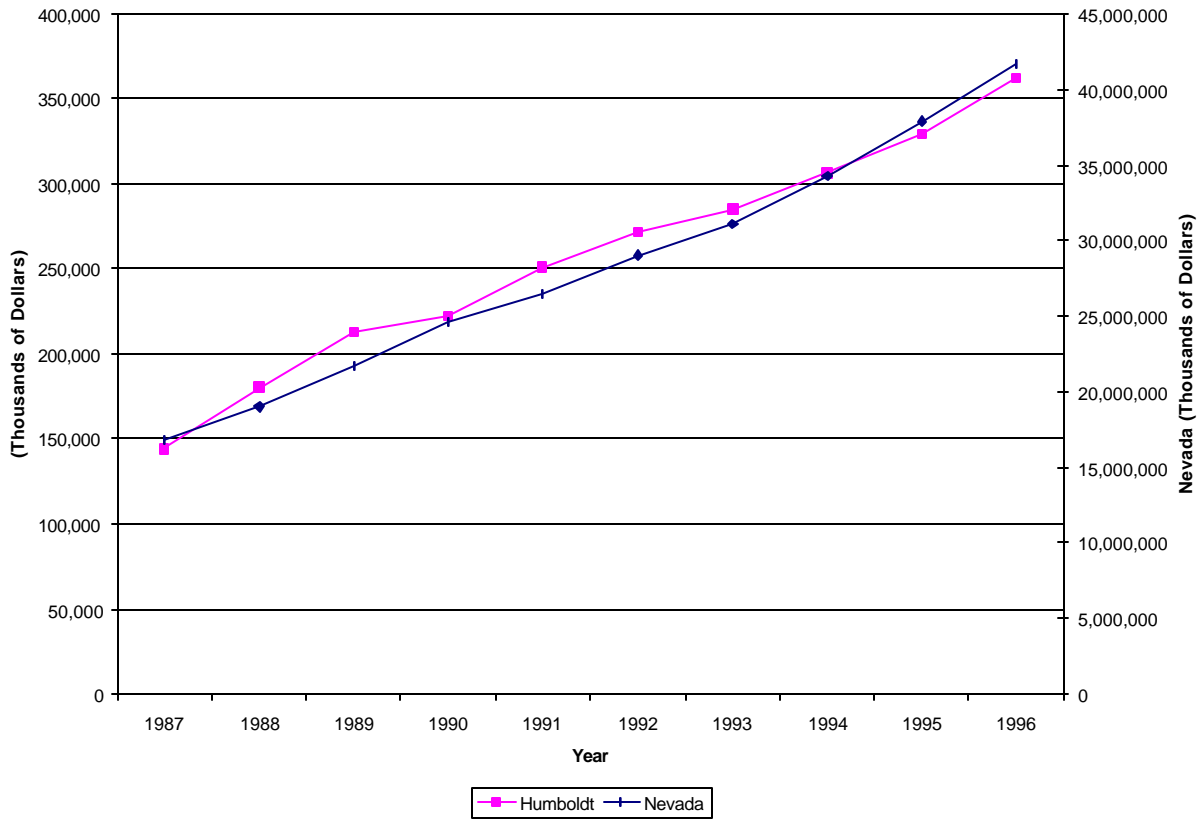
percent in 1996. The proportionate share of transfer payments for the state of Nevada has remained fairly constant, increasing from 13.2 percent in 1987 to 13.7 percent in 1996.

- Figure 29 shows components of industrial income from various local economic sectors. The tabular values are shown in Table 10 and 11. As one can see, mining and services sectors were the major economic sectors from 1987 to 1996.
- Tables 12 and 13 show the importance of the Service Sector to the state’s economy. Casino employment is categorized in the Service Sector and explains why the Service Sector plays such an important role in the economy.

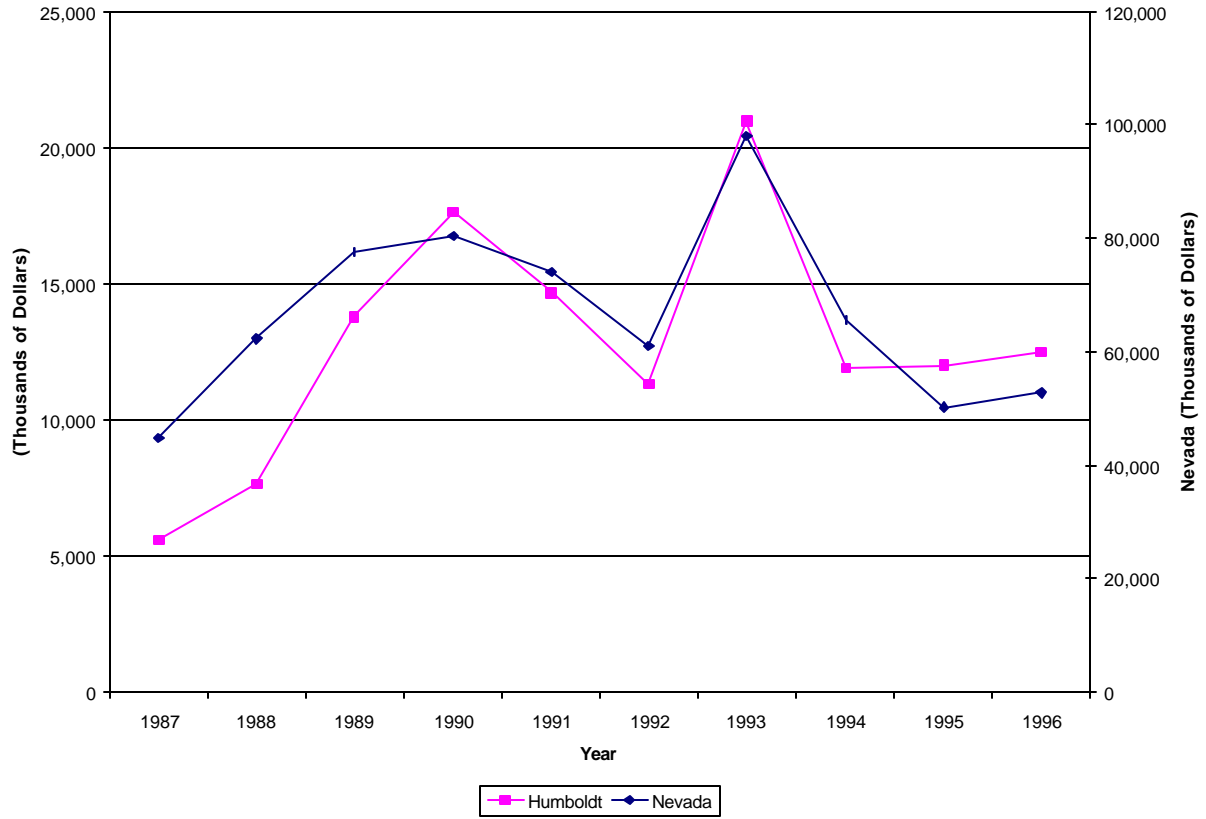
**Figure 23. Total Personal Income for Humboldt County and the State of Nevada, 1987 to 1996.**



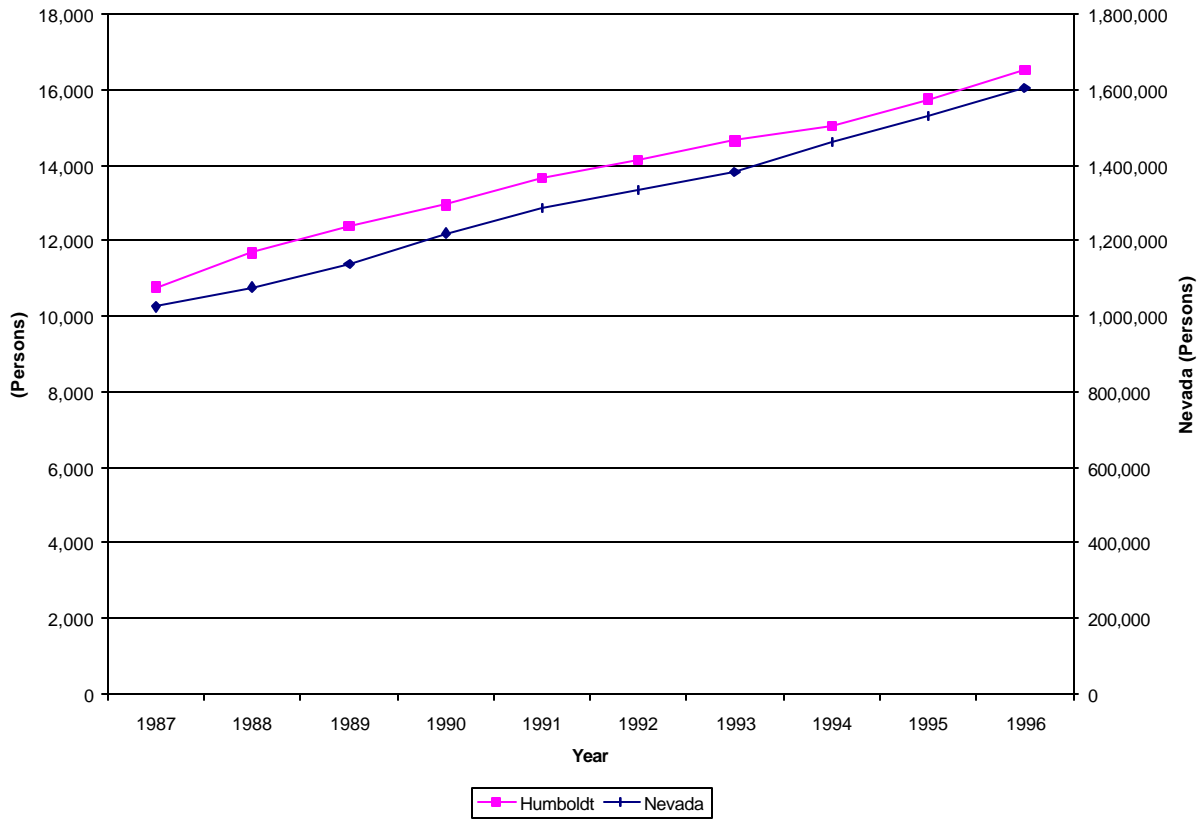
**Figure 24. Nonfarm Personal Income for Humboldt County and the State of Nevada, 1987 to 1996.**



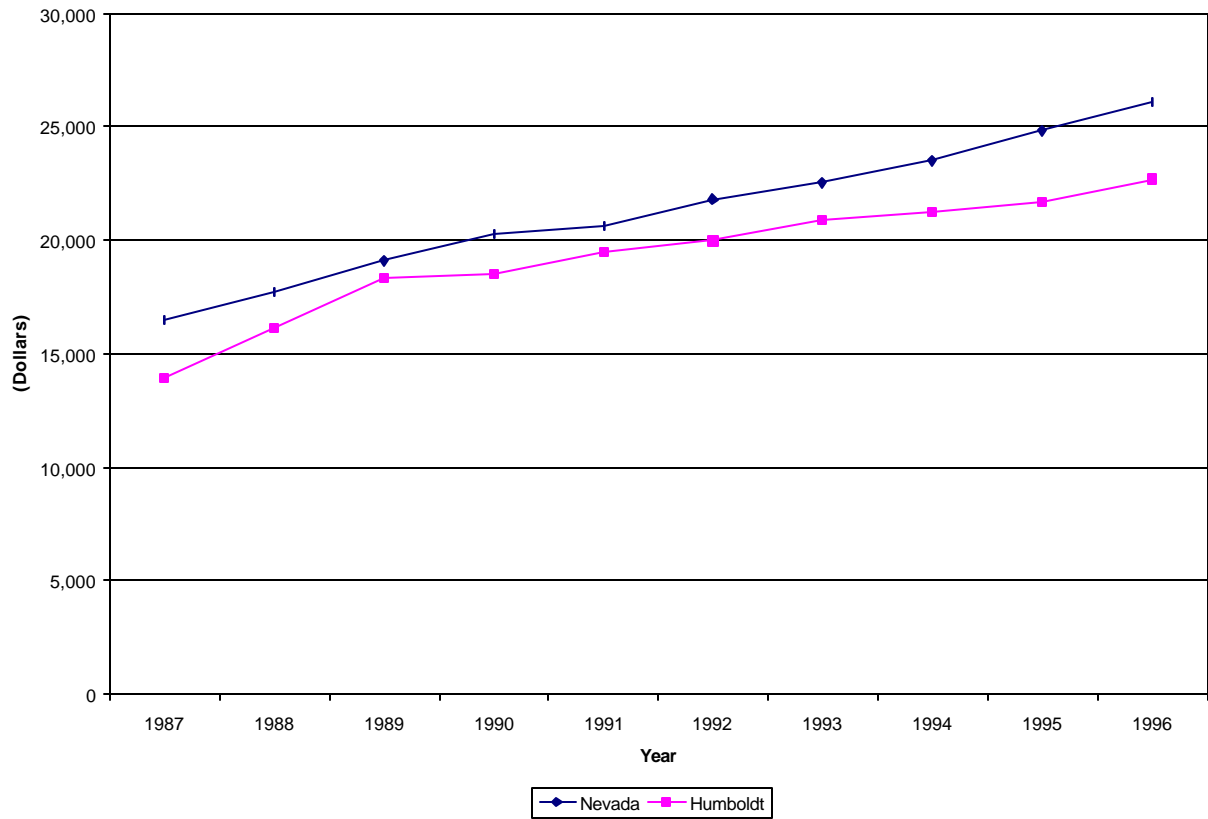
**Figure 25. Farm Income for Humboldt County and the State of Nevada, 1987 to 1996**



**Figure 26. REIS Population for Humboldt County and the State of Nevada, 1987 to 1996.**

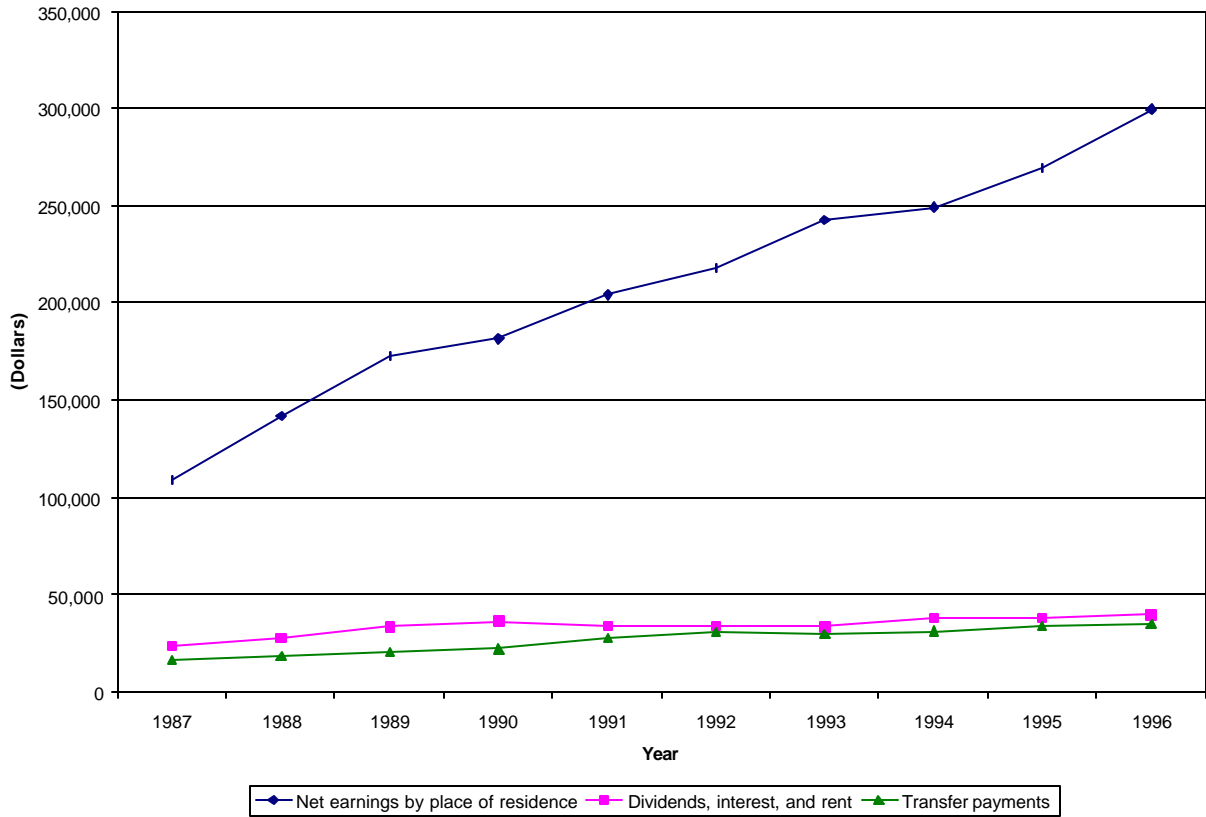


**Figure 27. Per Capita Personal Income for Humboldt County and the State of Nevada, 1987 to 1996.**

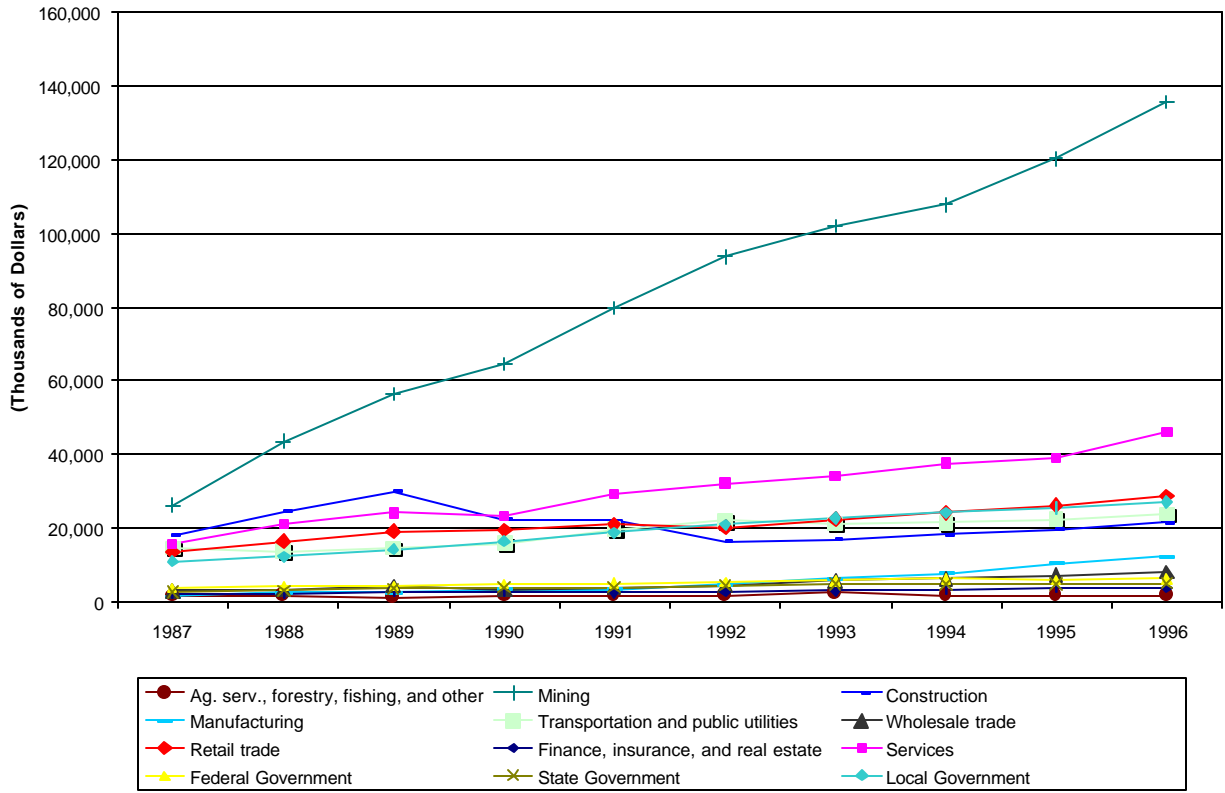




**Figure 28. Components of Income for Humboldt County for 1987 to 1996**



**Figure 29. Income by Selected Industry in Humboldt County, 1987 to 1996.**



**Table 10. Humboldt County Personal Income from 1987 to 1991**

	1987	1988	1989	1990	1991
<b>Personal income (thousands of dollars)</b>	149,600	187,958	226,468	239,661	265,642
<b>Nonfarm personal income</b>	144,030	180,308	212,712	222,008	251,000
<b>Farm income</b>	5,570	7,650	13,756	17,653	14,642
<b>Population (number of persons)</b>	10,764	11,658	12,369	12,954	13,629
<b>Per capita personal income (dollars)</b>	13,898	16,123	18,309	18,501	19,491
<b>Net earnings by place of residence</b>	109,137	142,180	172,632	181,784	204,117
<b>Dividends, interest, and rent</b>	24,003	27,872	33,419	35,930	34,032
<b>Transfer payments</b>	16,460	17,906	20,417	21,947	27,493
<b>Ag. serv., forestry, fishing, and other</b>	1,362	1,811	1,238	1,363	1,548
<b>Mining</b>	26,239	43,622	56,549	64,578	79,719
<b>Construction</b>	17,962	24,433	29,736	22,516	22,084
<b>Manufacturing</b>	1,524	2,267	2,401	3,312	3,183
<b>Transportation and public utilities</b>	14,639	13,627	14,641	15,877	19,786
<b>Wholesale trade</b>	2,851	3,367	4,249	3,292	3,918
<b>Retail trade</b>	13,324	16,418	19,160	19,398	20,893
<b>Finance, insurance, and real estate</b>	1,959	2,212	2,572	2,716	2,379
<b>Services</b>	15,969	21,149	24,124	23,270	29,344
<b>Government and government enterprises</b>	17,730	19,303	22,035	24,949	27,758
<b>Federal Government</b>	3,864	4,069	4,167	4,661	5,030
<b>State Government</b>	2,755	2,999	3,568	3,824	3,962
<b>Local Government</b>	11,111	12,235	14,300	16,464	18,766

**Table 11. Humboldt County Personal Income from 1992 to 1996**

	1992	1993	1994	1995	1996
<b>Personal income (thousands of dollars)</b>	282,430	305,943	318,388	341,010	374,243
<b>Nonfarm personal income</b>	271,137	284,986	306,496	329,010	361,782
<b>Farm income</b>	11,293	20,957	11,892	12,000	12,461
<b>Population (number of persons)</b>	14,140	14,636	15,014	15,745	16,489
<b>Per capita personal income (dollars)</b>	19,974	20,903	21,206	21,658	22,697
<b>Net earnings by place of residence</b>	218,026	242,645	249,255	269,274	299,858
<b>Dividends, interest, and rent</b>	34,098	33,242	38,114	38,032	39,310
<b>Transfer payments</b>	30,306	30,056	31,019	33,704	35,075
<b>Ag. serv., forestry, fishing, and other</b>	1,792	2,253	1,784	1,848	1,876
<b>Mining</b>	93,618	102,223	107,643	120,346	135,895
<b>Construction</b>	16,507	17,069	18,189	19,796	21,404
<b>Manufacturing</b>	4,799	6,149	7,824	10,534	12,124
<b>Transportation and public utilities</b>	22,189	21,198	21,484	22,274	23,859
<b>Wholesale trade</b>	4,211	5,601	6,363	7,261	8,153
<b>Retail trade</b>	20,167	22,357	24,116	26,316	28,553
<b>Finance, insurance, and real estate</b>	2,567	2,938	3,295	3,576	3,851
<b>Services</b>	32,146	33,907	37,472	39,070	45,906
<b>Government and government enterprises</b>	30,870	33,042	35,206	36,032	38,531
<b>Federal Government</b>	5,512	5,756	6,412	5,956	6,227
<b>State Government</b>	4,591	4,692	4,695	4,710	5,195
<b>Local Government</b>	20,767	22,594	24,099	25,366	27,109

Source: U.S. Department of Commerce, Regional Economic Information System, Bureau of Economic Analysis: Washington, D.C. 1998.

**Table 12. State of Nevada Personal Income from 1987 to 1991**

	1987	1988	1989	1990	1991
<b>Personal income (thousands of dollars)</b>	16,851,786	19,040,482	21,726,934	24,667,238	26,550,385
<b>Nonfarm personal income</b>	16,807,085	18,978,309	21,649,432	24,586,849	26,476,421
<b>Farm income</b>	44,701	62,173	77,502	80,389	73,964
<b>Population (number of persons)</b>	1,023,374	1,075,023	1,137,382	1,218,651	1,284,996
<b>Per capita personal income (dollars)</b>	16,467	17,712	19,103	20,241	20,662
<b>Net earnings by place of residence</b>	11,638,822	13,288,727	14,874,121	16,874,460	17,764,662
<b>Dividends, interest, and rent</b>	2,982,395	3,306,961	4,062,192	4,612,405	4,903,840
<b>Transfer payments</b>	2,230,569	2,444,794	2,790,621	3,180,373	3,881,883
<b>Ag. serv., forestry, fishing, and other</b>	58,252	66,358	76,037	89,515	92,455
<b>Mining</b>	309,411	423,980	537,980	594,507	606,136
<b>Construction</b>	1,027,710	1,307,993	1,644,248	1,813,143	1,622,622
<b>Manufacturing</b>	606,666	669,059	724,768	789,841	815,634
<b>Transportation and public utilities</b>	874,820	919,514	1,004,285	1,117,022	1,199,780
<b>Wholesale trade</b>	503,259	596,635	696,859	799,992	843,896
<b>Retail trade</b>	1,349,543	1,494,885	1,646,691	1,806,236	1,915,264
<b>Finance, insurance, and real estate</b>	600,536	720,324	741,644	839,306	874,544
<b>Services</b>	5,353,703	6,126,284	6,770,172	7,872,390	8,429,297
<b>Government and government enterprises</b>	1,869,620	2,017,500	2,241,065	2,504,509	2,799,610
<b>Federal Government</b>	654,222	709,344	766,514	837,818	912,218
<b>State Government</b>	399,939	438,523	486,729	554,342	621,367
<b>Local Government</b>	907,442	1,000,000	1,110,914	1,270,695	1,442,252

Source: U.S. Department of Commerce, Regional Economic Information System, Bureau of Economic Analysis: Washington, D.C. 1998.

**Table 13. State of Nevada Personal Income from 1992 to 1996**

	1992	1993	1994	1995	1996
<b>Personal income (thousands of dollars)</b>	29,070,590	31,146,968	34,289,610	37,946,923	41,715,703
<b>Nonfarm personal income</b>	29,009,607	31,048,895	34,224,140	37,896,621	41,662,969
<b>Farm income</b>	60,983	98,073	65,470	50,302	52,734
<b>Population (number of persons)</b>	1,332,714	1,382,480	1,458,905	1,529,549	1,600,810
<b>Per capita personal income (dollars)</b>	21,813	22,530	23,504	24,809	26,059
<b>Net earnings by place of residence</b>	19,589,261	21,186,415	23,459,490	25,724,587	28,386,031
<b>Dividends, interest, and rent</b>	5,088,611	5,305,518	5,922,120	6,919,055	7,627,608
<b>Transfer payments</b>	4,392,718	4,655,035	4,908,000	5,303,281	5,702,064
<b>Ag. serv., forestry, fishing, and other</b>	99,176	111,289	127,423	147,024	181,698
<b>Mining</b>	633,976	643,489	653,644	718,002	826,071
<b>Construction</b>	1,676,408	2,075,208	2,461,978	2,733,245	3,498,393
<b>Manufacturing</b>	955,718	1,021,703	1,191,639	1,318,768	1,464,102
<b>Transportation and public utilities</b>	1,258,733	1,376,660	1,516,508	1,643,003	1,786,413
<b>Wholesale trade</b>	932,057	951,684	1,038,003	1,151,282	1,302,137
<b>Retail trade</b>	2,067,061	2,188,884	2,459,708	2,671,566	2,974,888
<b>Finance, insurance, and real estate</b>	1,125,301	1,421,696	1,601,879	1,923,670	2,151,044
<b>Services</b>	9,333,944	9,844,178	10,906,605	11,861,631	12,592,506
<b>Government and government enterprises</b>	3,054,510	3,226,211	3,427,004	3,693,273	3,969,886
<b>Federal Government</b>	1,029,518	1,077,530	1,161,772	1,213,448	1,261,378
<b>State Government</b>	689,077	710,906	742,576	792,602	844,538
<b>Local Government</b>	1,588,881	1,726,870	1,852,308	2,010,010	2,204,694

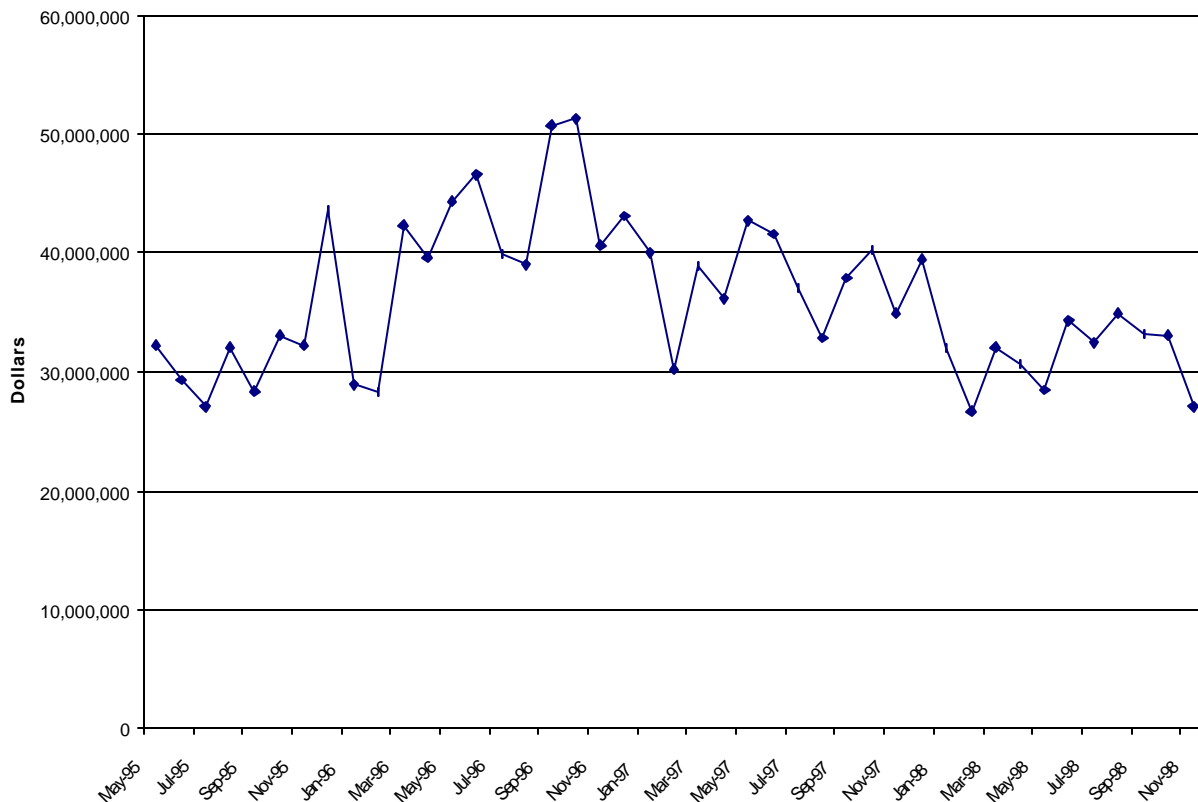
Source: U.S. Department of Commerce, Regional Economic Information System, Bureau of Economic Analysis: Washington, D.C. 1998.

## Chapter 4: Sales Taxes

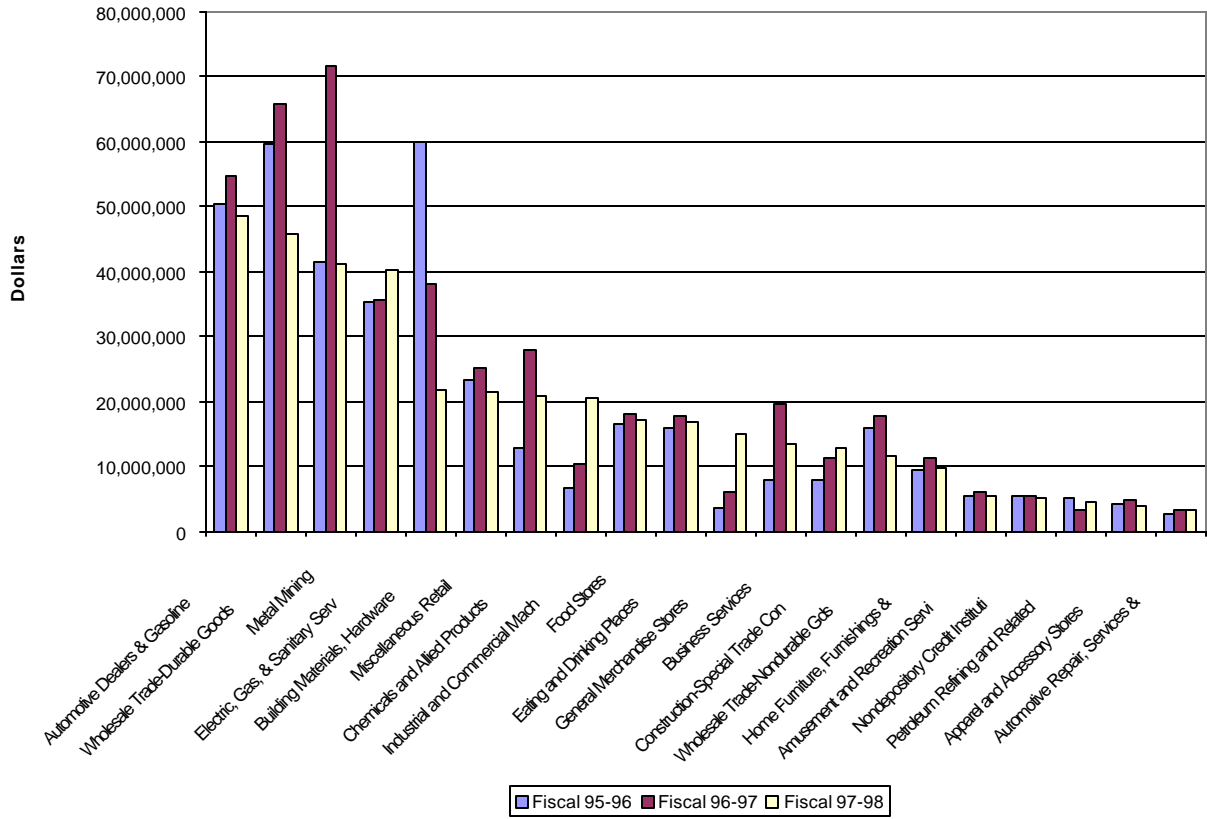
Sales tax data were collected from the Nevada Department of Taxation. These data are available on a monthly basis. Also taxable sales by specific categories are presented. The top twenty taxable sales categories will be discussed.

- Figure 30 and Table 14 show monthly total taxable sales for Humboldt County. Taxable sales for Humboldt County have ranged from a low of \$26,672,372 in February 1998 to a high of \$51,263,976 in October 1996. As seen from Figure 30, taxable sales for the county ranged from \$26,000,000 to \$51,000,000.
- Figure 31 and Table 15 show taxable sales for twenty selected sectors. The figure and table show that the Automotive Dealers and Gasoline Sector was the largest sector in taxable sales. Note that these sectors are increasing in 97-98. Taxable sales for this sector increased from \$54,706,414 for fiscal year 1996-97 to \$48,495,818 for fiscal year 1997-98. Other leading sectors include wholesale trade-durable goods, metal mining, and electric, Gas, & sanitary serv.

**Figure 30. Total Monthly Taxable Sales in Humboldt County for May 1995 to November 1998.**



**Figure 31. Top 20 Taxable Sales Categories for Humboldt County, fiscal years 1995-96; 1996-97; 1997-98**





**Table 14. Total Sales Tax Collected Humboldt County  
May 1995 to November 1998**

---

<b>May-95</b>	32,231,824	<b>Mar-97</b>	38,966,786
<b>Jun-95</b>	29,268,954	<b>Apr-97</b>	36,125,033
<b>Jul-95</b>	27,063,275	<b>May-97</b>	42,710,864
<b>Aug-95</b>	32,084,636	<b>Jun-97</b>	41,636,559
<b>Sep-95</b>	28,340,174	<b>Jul-97</b>	37,090,872
<b>Oct-95</b>	33,101,950	<b>Aug-97</b>	32,888,490
<b>Nov-95</b>	32,231,086	<b>Sep-97</b>	37,889,611
<b>Dec-95</b>	43,601,027	<b>Oct-97</b>	40,207,091
<b>Jan-96</b>	28,969,223	<b>Nov-97</b>	34,973,157
<b>Feb-96</b>	28,254,719	<b>Dec-97</b>	39,456,431
<b>Mar-96</b>	42,319,165	<b>Jan-98</b>	32,026,537
<b>Apr-96</b>	39,657,133	<b>Feb-98</b>	26,672,372
<b>May-96</b>	44,411,165	<b>Mar-98</b>	32,058,620
<b>Jun-96</b>	46,561,342	<b>Apr-98</b>	30,738,149
<b>Jul-96</b>	39,906,467	<b>May-98</b>	28,498,790
<b>Aug-96</b>	38,987,485	<b>Jun-98</b>	34,316,381
<b>Sep-96</b>	50,788,839	<b>Jul-98</b>	32,404,636
<b>Oct-96</b>	51,263,976	<b>Aug-98</b>	34,955,837
<b>Nov-96</b>	40,676,579	<b>Sep-98</b>	33,146,961
<b>Dec-96</b>	43,159,768	<b>Oct-98</b>	33,113,681
<b>Jan-97</b>	39,987,354	<b>Nov-98</b>	27,099,550
<b>Feb-97</b>	30,243,715		

---

**Table 15. Taxable Sales for Selected Business Sectors for Humboldt County, Fiscal Years 1995-96; 1996-97 and 1997-98**

SIC	Business code and type	Fiscal 95-96	Fiscal 96-97	Fiscal 97-98
	<b>Total Sales</b>	426,594,895	494,453,425	406,816,501
55	<b>Automotive Dealers &amp; Gasoline</b>	50,347,752	54,706,414	48,495,818
50	<b>Wholesale Trade-Durable Goods</b>	59,771,476	65,868,936	45,864,658
10	<b>Metal Mining</b>	41,396,255	71,592,738	41,317,184
49	<b>Electric, Gas, &amp; Sanitary Serv</b>	35,255,842	35,555,998	40,125,352
52	<b>Building Materials, Hardware</b>	59,951,058	38,031,537	21,585,575
59	<b>Miscellaneous Retail</b>	23,135,306	25,027,749	21,454,318
28	<b>Chemicals and Allied Products</b>	12,638,635	27,844,139	20,760,180
35	<b>Industrial and Commercial Mach</b>	6,809,437	10,495,528	20,639,861
54	<b>Food Stores</b>	16,432,508	18,140,249	17,166,367
58	<b>Eating and Drinking Places</b>	15,851,758	17,515,944	16,840,928
53	<b>General Merchandise Stores</b>	3,752,576	5,923,307	15,127,117
73	<b>Business Services</b>	7,866,257	19,527,614	13,521,235
17	<b>Construction-Special Trade Con</b>	7,955,181	11,250,310	12,805,952
51	<b>Wholesale Trade-Nondurable Gds</b>	15,828,688	17,699,194	11,617,091
57	<b>Home Furniture, Furnishings &amp;</b>	9,526,136	11,211,321	9,888,995
79	<b>Amusement and Recreation Servi</b>	5,367,976	6,079,000	5,490,534
61	<b>Nondepository Credit Instituti</b>	5,474,451	5,405,477	5,031,766
29	<b>Petroleum Refining and Related</b>	5,002,662	3,157,384	4,507,139
56	<b>Apparel and Accessory Stores</b>	4,165,651	4,661,649	3,870,871
75	<b>Automotive Repair, Services &amp;</b>	2,771,259	3,381,007	3,347,278
34	<b>Fabricated metal Products, EX</b>	8,841,231	8,916,456	3,116,959
89	<b>Miscellaneous Services</b>	11,304,923	5,066,608	2,693,427
65	<b>Real Estate</b>	2,273,333	2,002,067	2,553,009
15	<b>Building Construction-Gen Cont</b>	2,179,088	4,085,112	2,153,483
01	<b>Agricultural Production - Crops</b>	439,706	1,304,592	1,986,016
13	<b>Oil and Gas Extraction</b>	826,388	2,161,259	1,839,631
32	<b>Stone, Clay, Glass, and Concr</b>	1,122,367	2,116,561	1,788,858
39	<b>Misc Manufacturing Industries</b>	1,001,114	2,181,963	1,721,399
48	<b>Communications</b>	572,162	935,790	1,500,672
76	<b>Miscellaneous Repair Services</b>	1,658,804	2,417,726	1,391,862
36	<b>Electronic and Other Electrica</b>	566,173	454,974	846,036
16	<b>Heavy Construction Other Than</b>	1,577,476	2,749,815	842,683
99	<b>Nonclassifiable Establishments</b>	425,184	375,588	714,867
27	<b>Printing, Publishing, and Alli</b>	730,080	804,964	713,650
78	<b>Motion Pictures</b>	484,188	576,267	612,402
72	<b>Personal Services</b>	377,415	410,429	387,666
24	<b>Lumber and Wood Products, Exce</b>	2,480	17,846	349,772
42	<b>Motor Freight Transportation A</b>	496,036	434,549	347,794
07	<b>Agricultural Services</b>	321,291	398,358	286,952
40	<b>Railroad Transportation</b>	38,094	210,181	261,338
70	<b>Hotels, Rooming Houses, Camps</b>	256,857	293,917	229,827
25	<b>Furniture and Fixtures</b>	9,231	23,637	216,193
37	<b>Transportation Equipment</b>	250,196	198,465	170,049
80	<b>Health Services</b>	127,304	139,081	160,632

**Table 15. Continued**

<b>SIC</b>	<b>Business code and type</b>	<b>Fiscal 95-96</b>	<b>Fiscal 96-97</b>	<b>Fiscal 97-98</b>
38	Meadings, Analyzing, and Contr	494,782	2,678,648	107,579
33	Primary Metal Industries	17,303	2,099	78,044
30	Rubber and Misc Plastics Prods	32,312	81,732	54,764
60	Depository Institutions	163,368	61,382	48,812
62	Security and Commodity Brokers	0	16,770	43,306
26	Paper and Allied Products	29,256	29,956	26,775
86	Membership Organizations	162,795	77,430	22,474
82	Educational Services	18,846	10,822	13,719
20	Food and Kindred Products	8,797	13,926	13,431
23	Apparel and Other Finished Pro	129,258	18,735	13,421
14	Mining and Quarrying of Nonmet	74,177	15,242	8,720
87	Engineering, Accounting, Resea	209,260	6,396	7,748
67	Holding & Other Invest Offices	0	0	6,211
63	Insurance Carriers	3,432	5,638	5,706
95	Administration of Environment	5,608	731	5,513
31	Leather and Leather Products	10,019	11,342	4,101
21	Tobacco Products	0	1,505	3,708
02	Agricultural Production - Livestock	32,696	48,325	2,819
22	Textile Mill Products	0	163	2,815
81	Legal Services	1,071	1,296	1,618
64	Insurance Agents, Brokers	328	830	1,145
47	Transportation Services	476	167	925
08	Forestry	0	0	0
09	Fishing, Hunting, and Trapping	19,126	18,590	0
12	Coal Mining	0	0	0
41	Local and Suburban Transportation A	0	0	0
44	Water Transportation	0	0	0
45	Transportation By Air	0	0	0
46	Pipelines, Except Natural Gas	0	0	0
83	Social Services	0	0	0
84	Museums, Art Galleries, and B	0	0	0
88	Private Households	0	0	0
91	Executive, Legislative and Gen	0	0	0
92	Justice, Public Order & Safety	0	0	0
93	Public Finance, Taxation, and	0	0	0
94	Administration of Human Resour	0	0	0
96	Administration of Economic Pro	0	0	0
97	National Security and Internat	0	0	0
43	United States Postal Service	0	0	(249)