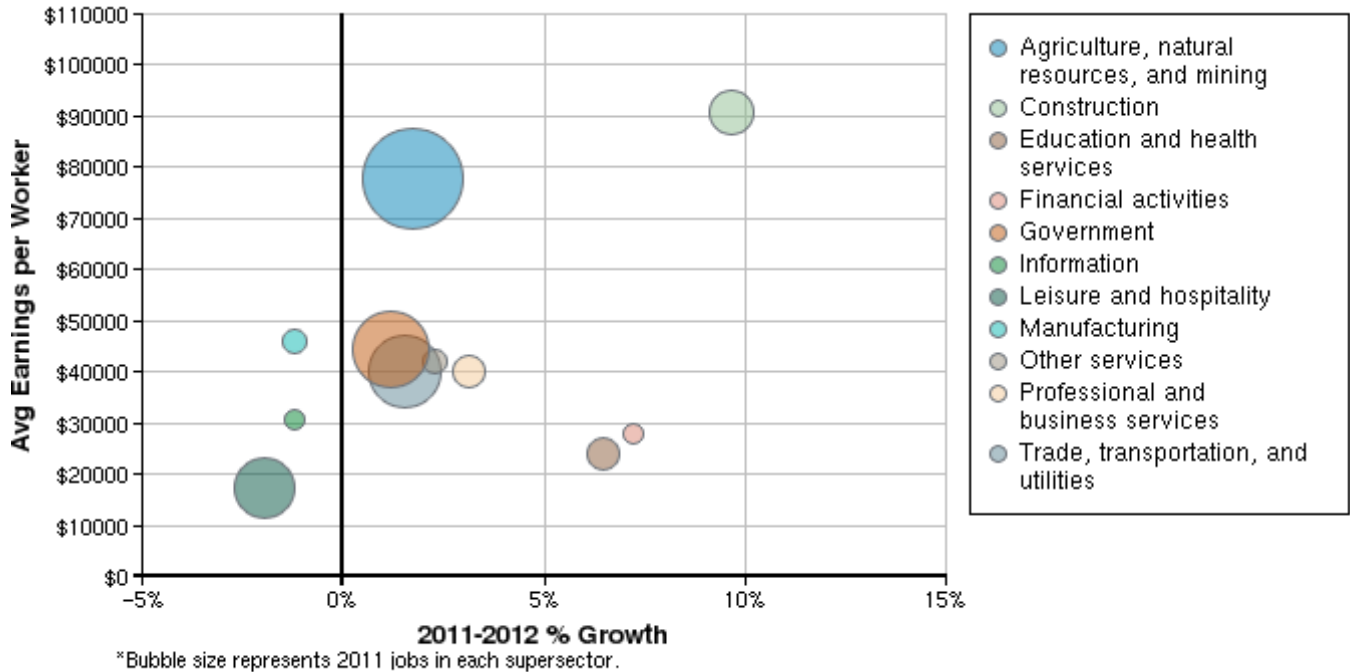


## Region Info

Humboldt County

## Industry Size and Growth

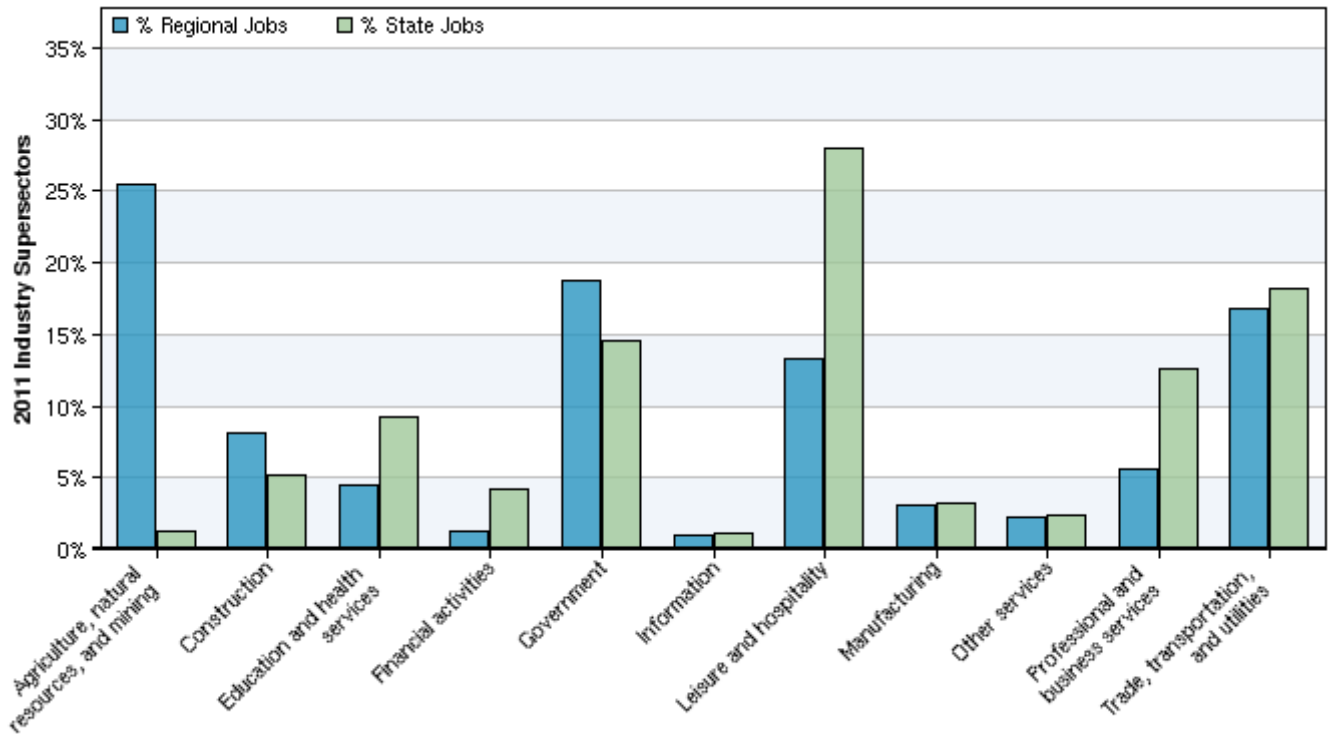
### 2011 - 2012 Size and Growth



Description	2011 Jobs	2012 Jobs	Growth	% Growth	2011 EPW
Agriculture, natural resources, and mining	2,049	2,085	36	2%	\$77,672
Construction	652	715	63	10%	\$90,794
Education and health services	355	378	23	6%	\$23,879
Financial activities	97	104	7	7%	\$27,994
Government	1,503	1,521	18	1%	\$44,307
Information	82	81	-1	-1%	\$30,534
Leisure and hospitality	1,073	1,052	-21	-2%	\$17,092
Manufacturing	245	242	-3	-1%	\$45,794
Other services	176	180	4	2%	\$42,035
Professional and business services	450	464	14	3%	\$40,151
Trade, transportation, and utilities	1,353	1,374	21	2%	\$40,041
<b>Total</b>	<b>8,034</b>	<b>8,194</b>	<b>160</b>	<b>2%</b>	<b>\$50,757</b>

Source: EMSI Covered Employment - 2012.1

## 2011 Industrial Makeup

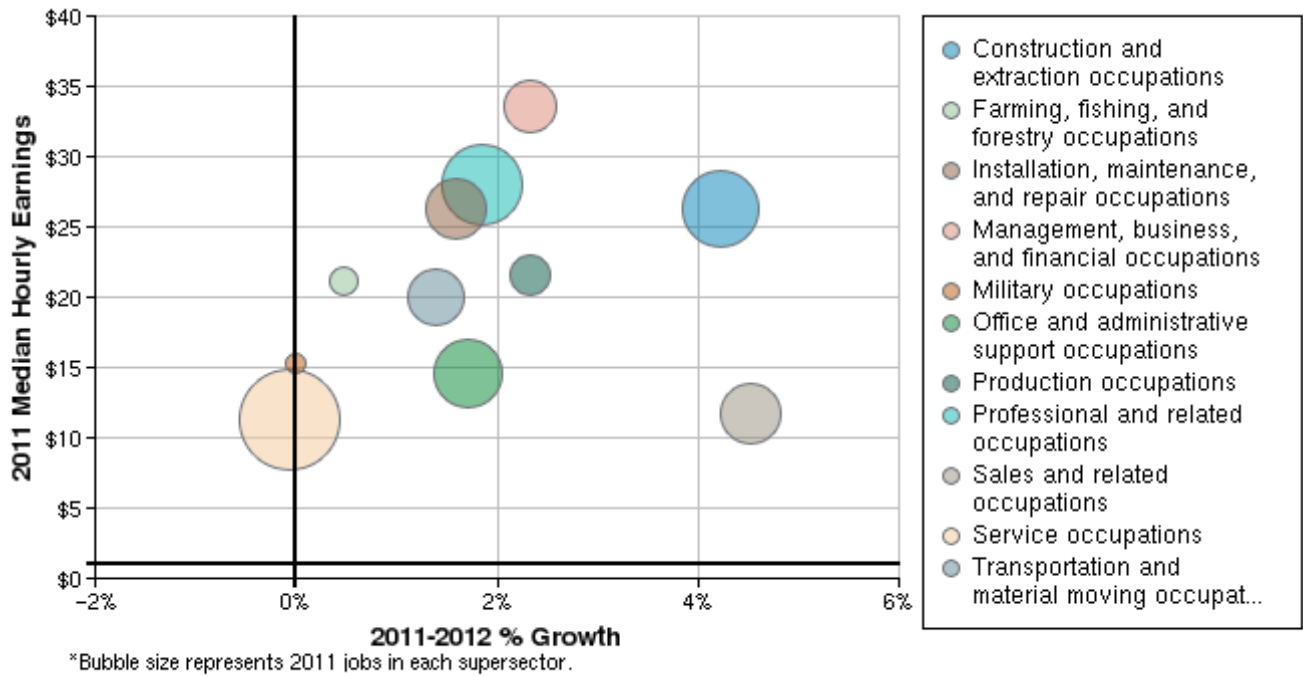


Description	2011 Regional Jobs	% Regional Jobs	2011 State Jobs	% State Jobs
Agriculture, natural resources, and mining	2,049	25.5%	14,658	1.3%
Construction	652	8.1%	58,379	5.1%
Education and health services	355	4.4%	105,045	9.2%
Financial activities	97	1.2%	47,672	4.2%
Government	1,503	18.7%	165,891	14.6%
Information	82	1.0%	12,347	1.1%
Leisure and hospitality	1,073	13.4%	319,381	28.1%
Manufacturing	245	3.0%	36,329	3.2%
Other services	176	2.2%	27,885	2.4%
Professional and business services	450	5.6%	142,913	12.6%
Trade, transportation, and utilities	1,353	16.8%	207,878	18.3%

Source: EMSI Covered Employment - 2012.1

## Occupation Size and Growth

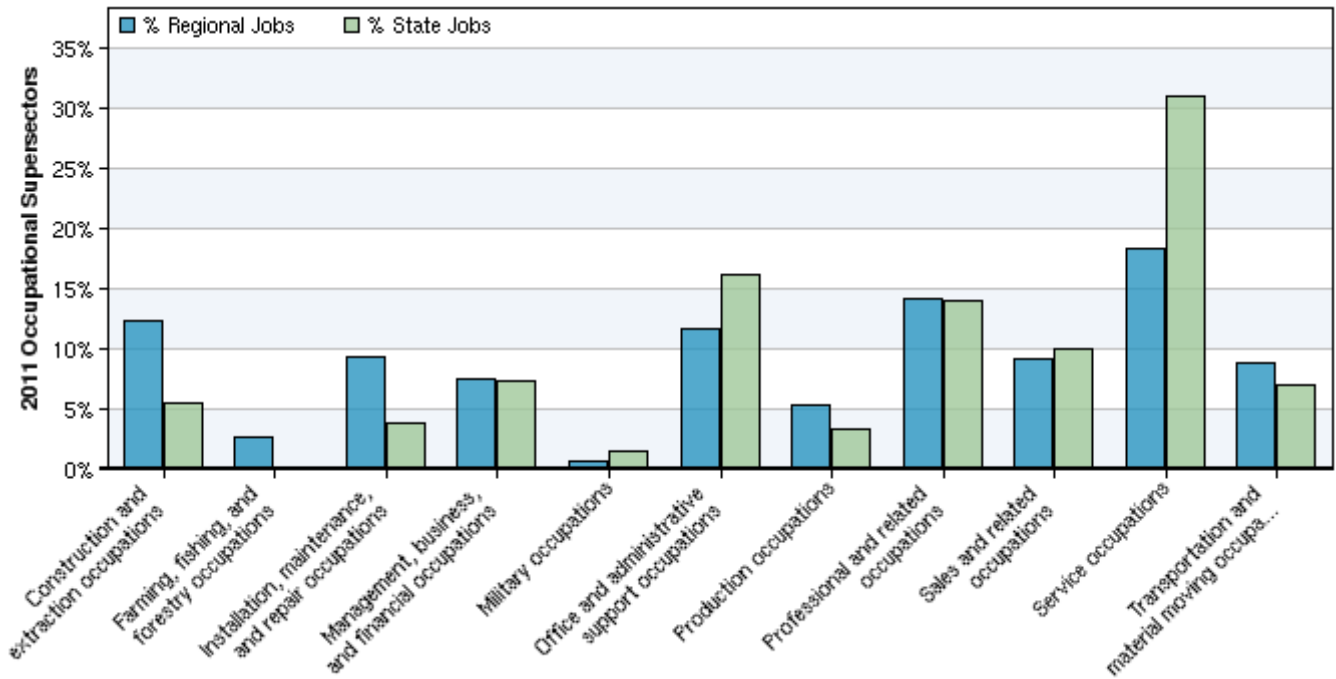
### 2011 - 2012 Size and Growth



Description	2011 Jobs	2012 Jobs	Growth	% Growth	2011 Median Hourly Earnings
Construction and extraction occupations	993	1,035	42	4%	\$26.28
Farming, fishing, and forestry occupations	212	213	1	0%	\$21.12
Installation, maintenance, and repair occupations	753	765	12	2%	\$26.33
Management, business, and financial occupations	602	616	14	2%	\$33.51
Military occupations	48	48	0	0%	\$15.25
Office and administrative support occupations	940	956	16	2%	\$14.56
Production occupations	431	441	10	2%	\$21.64
Professional and related occupations	1,139	1,160	21	2%	\$28.04
Sales and related occupations	731	764	33	5%	\$11.67
Service occupations	1,474	1,473	-1	0%	\$11.24
Transportation and material moving occupations	715	725	10	1%	\$20.04
Total	8,037	8,196	159	2%	\$20.61

Source: EMSI Covered Employment - 2012.1

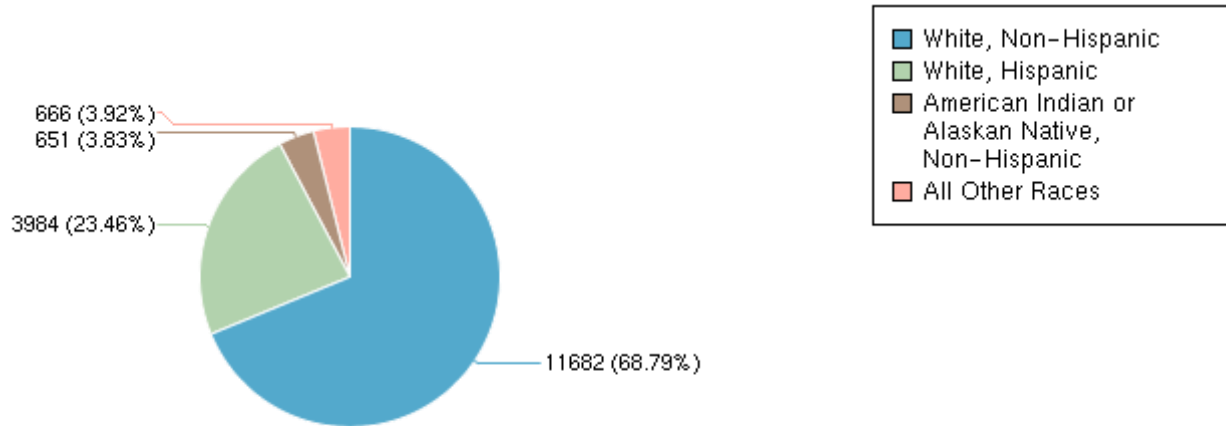
## 2011 Occupational Makeup



Description	2011 Regional Jobs	% Regional Jobs	2011 State Jobs	% State Jobs
Construction and extraction occupations	993	12.4%	62,193	5.5%
Farming, fishing, and forestry occupations	212	2.6%	2,050	0.2%
Installation, maintenance, and repair occupations	753	9.4%	43,616	3.8%
Management, business, and financial occupations	602	7.5%	84,234	7.4%
Military occupations	48	0.6%	17,172	1.5%
Office and administrative support occupations	940	11.7%	183,810	16.1%
Production occupations	431	5.4%	38,008	3.3%
Professional and related occupations	1,139	14.2%	159,749	14.0%
Sales and related occupations	731	9.1%	114,696	10.1%
Service occupations	1,474	18.3%	354,134	31.1%
Transportation and material moving occupations	715	8.9%	79,681	7.0%

Source: EMSI Covered Employment - 2012.1

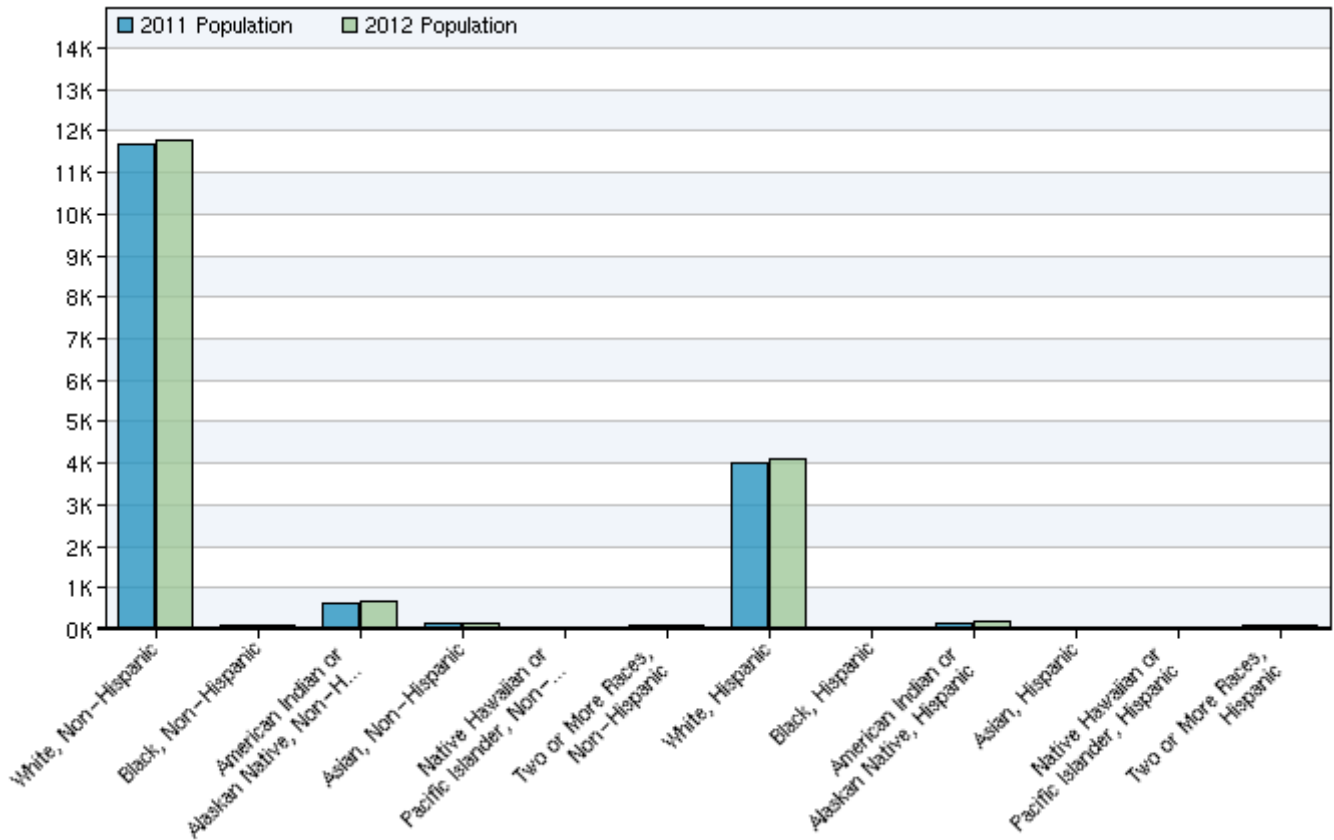
2011 Race/Ethnicity Breakdown



Ethnicity	2011 Population	% of Region
White, Non-Hispanic	11,682	68.79%
Black, Non-Hispanic	90	0.53%
American Indian or Alaskan Native, Non-Hispanic	651	3.83%
Asian, Non-Hispanic	125	0.74%
Native Hawaiian or Pacific Islander, Non-Hispanic	20	0.12%
Two or More Races, Non-Hispanic	100	0.59%
White, Hispanic	3,984	23.46%
Black, Hispanic	28	0.16%
American Indian or Alaskan Native, Hispanic	159	0.94%
Asian, Hispanic	30	0.18%
Native Hawaiian or Pacific Islander, Hispanic	13	0.08%
Two or More Races, Hispanic	101	0.59%

Source: EMSI Covered Employment - 2012.1

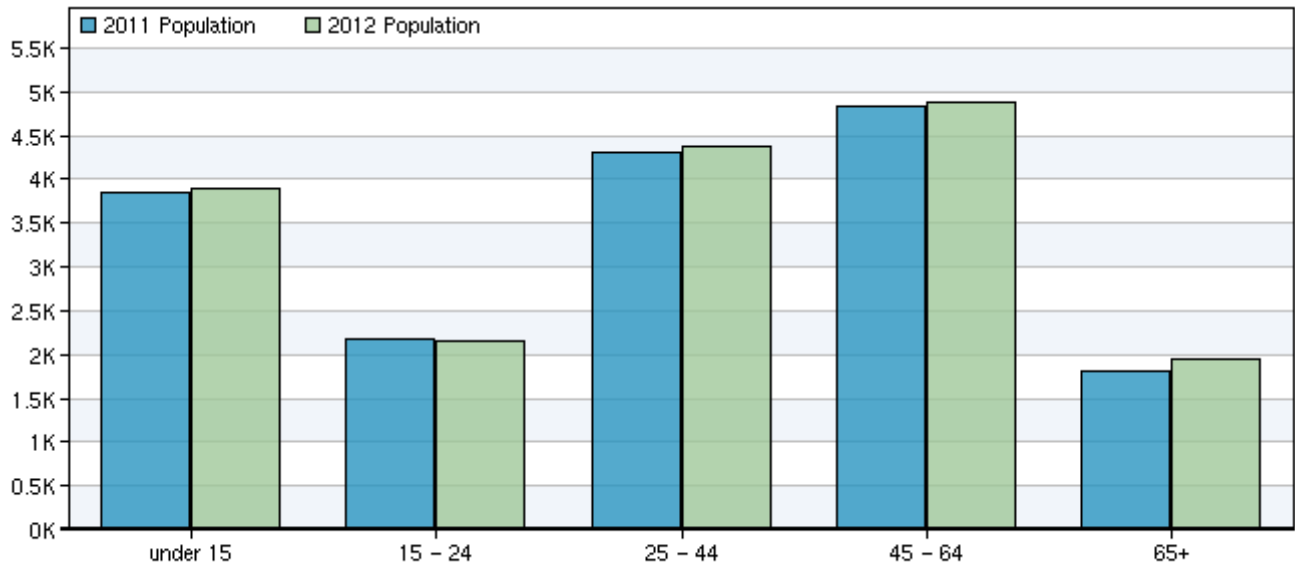
## 2011 - 2012 Race/Ethnicity Size and Growth



Race/Ethnicity	2011 Population	2012 Population	Change	% Change
White, Non-Hispanic	11,682	11,764	82	1%
Black, Non-Hispanic	90	86	-4	-4%
American Indian or Alaskan Native, Non-Hispanic	651	662	11	2%
Asian, Non-Hispanic	125	127	2	2%
Native Hawaiian or Pacific Islander, Non-Hispanic	20	23	3	15%
Two or More Races, Non-Hispanic	100	110	10	10%
White, Hispanic	3,984	4,126	142	4%
Black, Hispanic	28	26	-2	-7%
American Indian or Alaskan Native, Hispanic	159	170	11	7%
Asian, Hispanic	30	35	5	17%
Native Hawaiian or Pacific Islander, Hispanic	13	15	2	15%
Two or More Races, Hispanic	101	111	10	10%
<b>Total</b>	<b>16,982</b>	<b>17,254</b>	<b>272</b>	<b>2%</b>

Source: EMSI Covered Employment - 2012.1

## 2011 - 2012 Age Size and Growth



Age	2011 Population	2012 Population	Change	% Change
under 15	3,843	3,899	56	1%
15 - 24	2,184	2,153	-31	-1%
25 - 44	4,318	4,381	63	1%
45 - 64	4,833	4,881	48	1%
65+	1,804	1,941	137	8%
Total	16,982	17,254	272	2%

Source: EMSI Covered Employment - 2012.1

### Industry Data

In order to capture a complete picture of industry employment, EMSI basically combines covered employment data from Quarterly Census of Employment and Wages (QCEW) produced by the Department of Labor with total employment data in Regional Economic Information System (REIS) published by the Bureau of Economic Analysis (BEA), augmented with County Business Patterns (CBP) and Nonemployer Statistics (NES) published by the U.S. Census Bureau. Projections are based on the latest available EMSI industry data, 15-year past local trends in each industry, growth rates in statewide and (where available) sub-state area industry projections published by individual state agencies, and (in part) growth rates in national projections from the Bureau of Labor Statistics.

### Occupation Data

Organizing regional employment information by occupation provides a workforce-oriented view of the regional economy. EMSI's occupation data are based on EMSI's industry data and regional staffing patterns taken from the Occupational Employment Statistics program (U.S. Bureau of Labor Statistics). Wage information is partially derived from the American Community Survey. The occupation-to-program (SOC-to-CIP) crosswalk is based on one from the U.S. Department of Education, with customizations by EMSI.

### Demographic Data

The demographic data in this report is compiled from several sources using a specialized process. Sources include US Census Bureau annual estimates, birth and mortality rates from the US Health Department, and projected regional job growth.

### State Data Sources

This report uses state data from the following agencies: Nevada Department of Employment, Training and Rehabilitation, Information Development and Processing Division, Research and Analysis Bureau.